



ASHFORD CENTRAL SCHOOL NEWSLETTER

14
Mar
2025

IN THIS EDITION

Page 4 - After School Sewing

Page 5 - Talking Fish at the Willows

Page 7 - STUDEC Camp

Page 8- Science and Engineering Challenge 2025

Page 9 - FFL - Service

AROUND THE SCHOOL



UPCOMING EVENTS

TUE MAR 18

After School Sewing for Charity

THU MAR 20

P&C AGM at the Ashford Bowling Club, 4:00pm start

FRI MAR 21

Harmony Day - Wear a splash of orange

MON MAR 24

Primary NW Swimming Trials

MON MAR 24

Year 5/6 Science Excursion - Pindari Dam

TUE MAR 25

Essential Energy Tour - Inverell Depot

TUE MAR 25-THU MAR 27

TAFE- TVET Animal Care

WED MAR 26

Year 7 & 10 Immunisation catch up

WED MAR 26

Preston Campbell Cup - Primary - Warialda

 02 6725 4101

 Ashford Central School

 51 Martyn Street, Ashford NSW 2361

 ashford-c.school@det.nsw.edu.au

 <https://ashford-c.schools.nsw.gov.au/>



FROM THE PRINCIPAL

The last two weeks have flown by with a number of engaging learning activities being offered to our students.

On Tuesday 4th March, Mrs Lockett and her fabulous team of helpers began their after school sewing program for 2025. It is always great to see the eager students heading down to join in after school. They create a number of amazing items with donated materials for a number of great charities, support services and hospitals in the area. This is an outstanding cause which teaches students about giving back to the community. Mrs Lockett also took some of the items produced by students last year to the Ashford Show pavilion, with some good results. As always, thank you to Mrs Lockett and her team for their ongoing contribution.

Last Wednesday morning students in Yr 7 - 12 attended the Elevate Education study skills workshop. The students learned about positive study skills and how these can help with results.

Last week I had the pleasure of joining our STUDEEC Leaders at the annual Green Valley Leadership Camp. Our students did an amazing job of deciding key roles; discussing leadership and how we can all use our strengths to be great leaders; and the planning of our fundraising and social events for 2025. The students also had some fun with time allocated to the waterslide and evening events, including a scavenger hunt in the museum and a trivia night. Thanks go to Mrs Blake and Mrs Grabham for giving their time to prepare, organise and attend the excursion with our students. A large thank you also goes to our non-teaching staff who prepared food and excursion details.

After being at Green Valley for two nights we had a few students who attended the University of Newcastle Science and Engineering Challenge at the Inverell RSM Club. We boarded the vehicle at Green Valley and drove to Inverell to meet up with the rest of our ACS students, for a day of competing in challenges, along with a number of other students from schools across the area. The activities provided a challenging environment for our students with a lot of trial and error. Thank you to Mr Hollands and Mrs Foelz for attending the day with me. It was great to see our Yr 7 - 10 students competing against other schools who only took students from Year 10. They were able to hold their own and we are proud of their efforts.

This week saw the start of NAPLAN for Yr 3, 5, 7 and 9. Students undertook tests in Writing, Reading, Conventions of Language (Spelling, Grammar and Punctuation) and Numeracy.

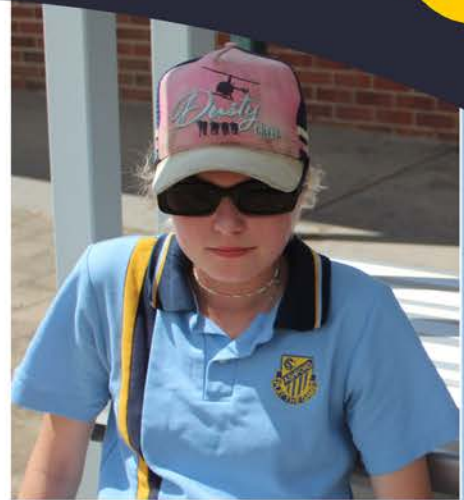


This meant that timetables were altered slightly for this week to accommodate the assessments. Fingers crossed, we look forward to seeing results later in the year. Thank you to Mrs Thibault who was the NAPLAN Coordinator this year.

We have been seeing great success with students arriving to school wearing the correct uniform. As the weather becomes cooler, please ensure your children are wearing the correct jumpers and pants. If you need new uniforms, please see our office staff to purchase new ones. Alternatively, students can wear a navy jumper of their choice, as long as it doesn't have large brand names all over it. A small logo on the chest is fine. If students arrive to school with an incorrect uniform they will be taken to the office and given clothes to change into.

As always, if you would like to arrange a time to meet with your child's teacher, please feel free to contact the front office to make a suitable time to meet with them. We always value your input into your child's learning and share the same goal of seeing them succeed.

Mr Wrobel



LIBRARY DAYS 2025

Kindergarten- Wednesday

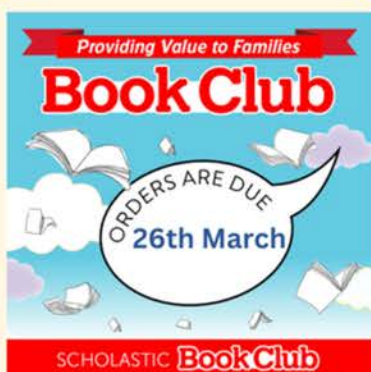
1/2- Wednesday

3/4- Thursday

5/6- Tuesday

Please remember your library bag

Book Club- Issue 2 Out Now





AFTER SCHOOL SEWING

The ACS Afternoon Sewing for Charity group resumed for 2025 and have already been very busy making 7 drawstring bags and 1 fidget mat to donate to charity, and 3 light box cases for the school's art department. Its great to be back !!



Next P&C Meeting

Thursday, 20th March

4:00pm

Ashford Bowling Club

Pizza and garlic bread will be provided

All are welcome !!!





TALKING FISH AT THE WILLOWS

A selection of students from Years 7-10 engaged in a cultural experience around fishing and conservation at The Willows which was organised by Northern Tablelands Local Land Services. The day included learning about fish and riverway monitoring, fishing, tagging and the associated equipment, and career options. There were also hands on activities making fish hotels, weaving, collecting bait and fishing.

Special thanks to all those involved in providing this wonderful opportunity for our children to connect with culture and country.







STUDEC CAMP

On Wednesday 5th March STUDEC students travelled to Green Valley Farm to participate in their annual leadership camp. Students were involved in leadership activities that helped to strengthen their capabilities as student leaders. STUDEC formed committees and planned events for 2025. We look forward to sharing our events with the school and community as the year progresses.



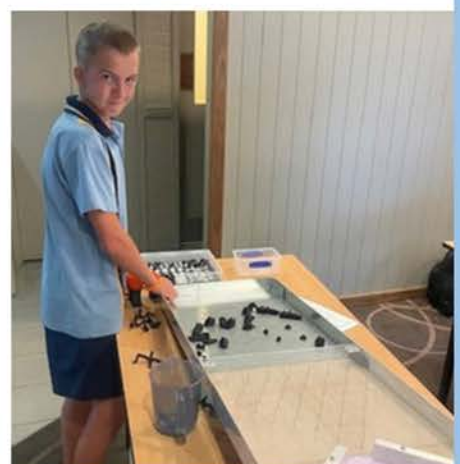


SCIENCE & ENGINEERING CHALLENGE

On Friday, 7th March, a team of Ashford's budding scientists and engineers attended the Sapphire Science & Engineering Challenge in Inverell. Breaking into small project teams, students were asked to explore a series of challenges and develop solutions to the presented dilemmas.

Suffice to say, Ashford now holds expertise in building balsa wood gliders, designing wind turbines, communication coding, electrical grid dilemmas, designing fishing traps and even some social engineering.

Special mention goes to the teams of Kurt & Zane along with Sarah & Michael who took on the whole day challenges of Bridge Building and EcoHabitat.





FFL - ASHFORD PRESCHOOL

We would like to say a big thank you to the Ashford Preschool for hosting the FFL Students on Tuesday, 11th March. A great time was had by all.



WEAR A SPLASH OF ORANGE

CELEBRATE HARMONY DAY 2025
FRIDAY 21ST MARCH



TOP SCHOOL ATTENDERS

Congratulations to the following students for achieving above the state average of 92% attendance.

CONGRATULATIONS!

Kymarni ALLEN	Lillie-Anne DELL	Ada-Blu LAVENDER	
Izayah ALLEN	Izaiah DEVER	Lucas MACKAY	
Alaynah ARCHER	Adam DONEY	Jack MACKAY	
Lincoln ARCHER	Mae DONEY	Lexi MARTINEZ	
Tiarnie BATTY	Joy DONEY	Hailee-Mae MURPHY	
Duke BEVERIDGE	Eve EDWARDS	Jack MURPHY	
Theo BOYD	Ethan ELPHICK	Mia MURPHY	
Stuart BRADLEY	Bailey FOELZ	Colt MURPHY	
Alyna BRIGGS	Ella GRABHAM	Sophie RODDA	
Jaxon CHARLES	Thomas GRABHAM	Xavier ROLLINSON	
Kurt CHARLES	Scarlett HALLORAN	Bonnie SARA	
Zane CHARLES	Jacob HILLHOUSE	Tyler SCHUMANN	
Jaidean CONNORS	Johnathan HILLHOUSE	Kyson SHORT	
Flynn COOK	Leonard IRVING	Mia STEWART	
Alaska COOMBES	Kytiana IRVING	Nina SUNDERLAND	
Kane COOMBES	Letti IRVING	Ruby TAYLOR	
Gloria CRAFAR	Wyatt LANGBEIN	Harriette THOMAS	
Duncan CRAFAR	Charlie LARFIELD	Madeline THOMAS	

Your Wellbeing Nurse

You can talk to your wellbeing nurse about:

- health and wellbeing concerns
- healthcare options
- finding health and community services.

Any student enrolled at a school with a wellbeing nurse and their family members can get support from a wellbeing nurse.

Parents

- Contact the school to ask to see or speak to the wellbeing nurse
- Let a teacher or the school learning and support team know you would like to see the wellbeing nurse.

Students 14 years and older

- Let a teacher or the school learning and support team know you would like to see the wellbeing nurse
- Approach the wellbeing nurse directly to speak with them privately.

Your wellbeing nurse is at the school on
19/3, 2/4

Contact your wellbeing nurse
Rebecca Collyer
0457681867

Your wellbeing nurse is a highly skilled registered nurse from NSW Health.

Your wellbeing nurse helps students and their family get health and wellbeing support.



Visit www.health.nsw.gov.au/whinprogram or scan the QR code for further information about wellbeing nurses.



Wellbeing and Health In-reach
Nurse Coordinator program



Rebuilding Public Education

NSW Department of Education

Ashford Central School
Project update | February 2025

Investing in our schools

As part of the NSW Government's plan to rebuild public education, the 2024-25 Budget is delivering record education funding, including \$1.5 billion for maintenance and local upgrades.

Ashford Central School facilities upgrade

As part of this investment, Ashford Central School will receive a share of \$4.2 million funding allocated to local schools to upgrade learning and teaching facilities.

The allocation will be spent on installing 4 extra air conditioning units in the Building B food technology classroom.

This work is expected to be completed by April.

More information

If you have any questions about this project, please contact the NSW Department of Education during business hours on the contact details below.



Email: schoolinfrastructure@det.nsw.edu.au
Phone: 1300 482 601
www.schoolinfrastructure.nsw.gov.au





STAR TICKET CANTEEN VOUCHER WINNERS

CONGRATULATIONS

Kinder	Tayla Stevens	Harriette Thomas
1/2	Allakae Hillhouse	Ruby Taylor
3/4	Tyler Schumann	Kane Coombes
5/6	Johnathan Hillhouse	Kash Wilde
Secondary	Sam Baker	Mia Murphy

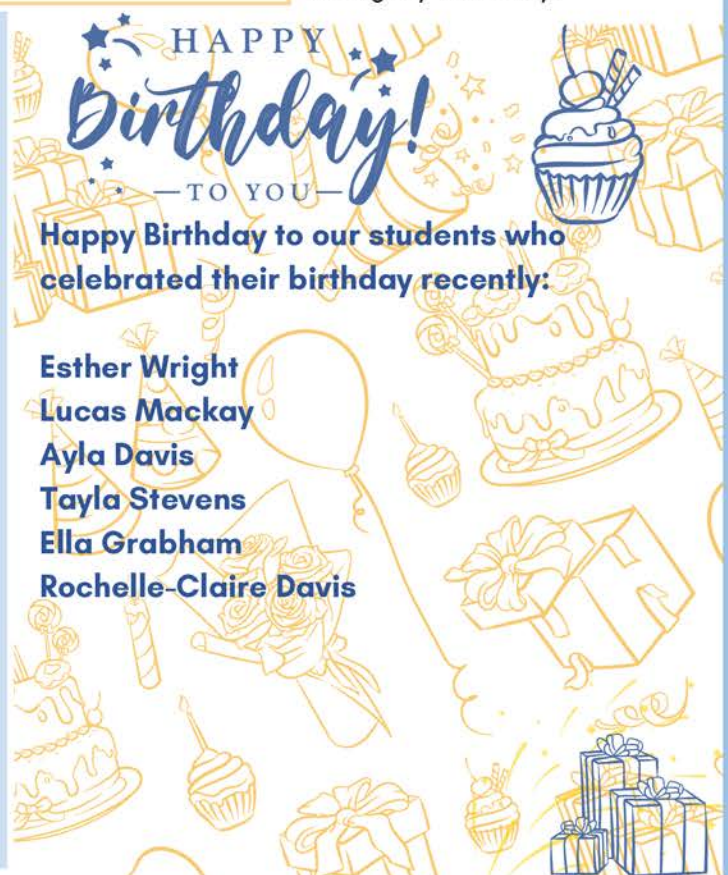
Star tickets are token rewards that are handed to students displaying positive behaviour in any setting to reinforce expectation. It is the students responsibility for placing the completed star ticket into their allocated star ticket box, which is located in the Ashford Central School Library. Tickets are drawn out of the star ticket box by the teacher at fortnightly assembly.

TOP MERIT AWARD RECIPIENTS

PRIMARY

Letti Irving
Mae Doney
Thomas Grabham
Arya Green
Miriana Blogg
Nina Sunderland
Eve Edwards
Lincoln Archer
Scarlett Halloran
Noah Ryan
Colt Murphy
Alyna Briggs
Harriette Thomas
Kyson Short
Sophie Rodda
Izaiah Dever

SECONDARY



Happy Birthday to our students who celebrated their birthday recently:

Esther Wright
Lucas Mackay
Ayla Davis
Tayla Stevens
Ella Grabham
Rochelle-Claire Davis

ASHFORD CENTRAL SCHOOL CANTEEN MENU

Term 1, 2025



SANDWICHES

Cheese or vegemite or jam	\$3
Chicken or ham or egg	\$4
Egg and lettuce	\$5
Chicken, lettuce + mayonaise	\$5
Chicken or ham + salad	\$6
Toasted cheese	\$4
Toasted ham + cheese	\$4
Toasted spaghetti	\$4

WRAPS

Chicken, lettuce and mayonaise	\$5
Chicken or ham + salad	\$6
Chicken caesar salad	\$6

HOT FOOD

Cheese Muffin	\$1.50
Muffin pizza	\$2
Hash brown	\$2
Fried Rice	\$4
Cheeseburger	\$4.50
Chicken tender slider	\$4.50
Spaghetti bolognese	\$5
Savoury mince & rice	\$5
Taco bowl with corn chips	\$5.50
Chicken korma & rice	\$6.50
Hamburger	\$7

SALADS

Garden Salad	\$4.50
Garden Salad with chicken	\$6.00
Garden Salad with ham	\$6.00
Chicken caesar salad + egg	\$6.00

SNACKS

Orange	\$1
Apple	\$1
Rockmelon cup	\$1
Watermelon cup	\$1
Custard	\$1
Yoghurt - berry or vanilla	\$1
Pikelet and jam	\$1
Brownie GF	\$1.50
Fruit Cake	\$1

SPECIALS

Tuesday - rice paper wrap	\$4.50
Wednesday - sushi	\$4
Thursday - Hot dog	\$5
Friday - Plain pie	\$5.50
Sauce - BBQ or Tomato	50c

DRINKS

200ml 100% Juice Popper	\$2
300ml water	\$1
600ml water	\$2
300ml strawberry milk	\$2
300ml chocolate milk	\$2
Smoothie - berry or mango or banana	\$5

DRINKS - SECONDARY ONLY

500ml strawberry milk	\$3.50
500ml chocolate milk	\$3.50
500ml vanilla malt milk	\$3.50
500ml caramel milk	\$3.50

- EFTPOS AVAILABLE
- ORDER ONLINE VIA SENTRAL APP FROM WEEK 3
- ORDERS MUST BE PLACED BY 9.30 AM EACH DAY

Rural and regional school travel

Apply online for free school travel in rural and regional NSW. You only need to complete one form, even for journeys using more than one operator.

Who can apply?

To be eligible for free school travel, students may need to live a minimum distance from their school:

Years K-2 (Infants)

There is no minimum distance.

Years 3-6 (Primary)

More than 1.6km straight line distance or at least 2.3km walking.

Years 7-12 (Secondary)

More than 2.0km straight line distance or at least 2.9km walking.

Who needs to apply

You only need to apply if the student has never been approved for free school travel before. Students in a shared parental responsibility situation (e.g. joint custody) should submit a separate application for both addresses.

How to update your details

You need to update student details online if the student is changing their name, address, school or campus, or their Transport operator. You can update them at transportnsw.info/ssts-update

Frequently asked questions

Does the approved free travel include travel outside school hours?

Approved free school travel is only for travel to and from school. So for travel after hours, on weekends or during school holidays, students will need to buy a ticket.

What if there's no public transport in my area?

In areas where there is no public transport, you may be able to get a subsidy for driving the student to school. For details, visit transportnsw.info/school-students

How do I apply if the student needs to travel from two addresses because the parents live separately?

Each parent (or the student if aged 16 or over) needs to apply separately for each address. The same minimum distances apply.

How to apply for free travel for the first time

You can apply for free school travel for next year from the start of Term 4 this year.

Step 1

Once you have enrolled your child at the new school, apply online by giving your home address and telling us which bus company the student needs to travel with between home and school. You can apply online at transportnsw.info/school-students

Step 2

The school then confirms to us that your details are correct.

Step 3

We will then work on your application. You will get an email confirming if the student is approved for free travel. If so, we will tell your local bus company who may send a school travel pass (if needed) to your school or, in some cases, the bus company will contact you directly about travel arrangements.

A parent or guardian must apply for students aged 15 years and under. Students who are 16 years and over must apply for themselves.

What my card will look like



Want to know more?

For more information, visit transportnsw.info/school-students

For help in your language, call the Translating and Interpreting Service (TIS) on 131 450.

Privacy

For information on how we handle personal information please refer to the Opal Privacy Policy at transportnsw.info/tickets-opal/opal-privacy-policy and the School Pass Terms transportnsw.info/school-pass-terms



TEDDY BEAR'S PICNIC

FREE COMMUNITY EVENT

Saturday, 15th March
McRAE Park Ashford
10:00AM-4:00PM

ENTERTAINMENT FOR ALL AGES

Best decorated push bike
Jumping castle
Raffles
Trains
Yabbie racing
Games, novelty events & stall holders
Sausage sizzle, hot chips and cold drinks

TEDDY BEAR COMPETITION

Best dressed bear; Biggest bear;
Most loved bear;
Categories: juniors/open/seniors



Supported by Inverell & Inverell MacIntyre, Ashford, Bundarra, Glen Innes & Glen Innes Highlands Lions Clubs
Sponsored by Print Anything

UPCOMING COMMUNITY EVENTS

SAT MAR 15

Teddy Bear's Picnic at McRAE Park in Ashford.
A community event including entertainment and food for the whole family.
10:00am - 4:00pm.

SAT MAR 15

Multicultural Food Festival combined with the Grafton to Inverell Finish Line celebrations.
Victoria Park, Inverell, starting 10:30am.

SUN MAR 16

Inverell Classic Motor Show
At the National Transport Museum, Gates open 7:30am

TUE MAR 18

Be the Ripple in The Wave - Warren Davis, one of Australia's leading rural mental health speaker and advocate will be sharing his journey with us.
6:00pm at the Ashford Showground.
RSVP Trudy 0488 566 816

SAT MAR 22

Bundarra Treasure Hunt Swapmeet and Car Boot Sale. 9am-3pm at the Bundarra Showground.

TUE APR 1

Ashford LALC Members Meeting, 12:30 at the Ashford LALC building. Lunch will be provided.

SAT APR 12 - SUN APR 13

Family Mystic Expo at the Inverell RSM Club

SAT APR 19-SUN APR 20

Back to Ashford Reunion.

RIDDLE

Of the Week

What gets bigger when more is taken away?

Answer on the back page

To have your community event or news listed on this page, please contact the school.

☎ 02 6725 4101

✉ ashford-c.school@det.nsw.edu.au



 AT THE ASHFORD RURAL TRANSACTION CENTRE



FREE FRESH FOODS

EVERYONE WELCOME

Free fresh foods vary from week to week. This is a sample of what was available this week!

WEDNESDAY 2.30- 4.30PM

SUNDAY 2.30 - 4.30PM



Potatoes
Loose

Free



Chicken Caesar
Salad Kit

Free



Sugar Coated Donuts
12 Pack

Free



Iced Donuts
6 pack

Free



Hot Cross Buns
6 pack

Free



Pumpkins
Whole or cut

Free



Asian Greens
Pak Choy

Free



Breadrolls
Various Types

Free



Bananas
Bunches

Free

 **AT THE ASHFORD RURAL TRANSACTION CENTRE**

EVERYONE WELCOME

WEDNESDAY 2.30- 4.30PM | SUNDAY 2.30 - 4.30PM

OPENING HOURS

The Villiage Table is open at the Ashford Rural Transaction Centre every Wednesday between 2.30pm and 4.30pm, as well as Sunday between 2.30pm and 4.30pm.

LOW COST GROCERIES

With the ever increasing cost of living, why not give your household budget a helping hand and utilise some of the low cost groceries available every week.

FREE FRESH FOODS

In addition, a selection of FREE fresh food such as fruit, vegetables, breads and baked treats are available each Wednesday. Whilst the selection of free foods varies from week to week, there is always a good variety.

HOMEMADE PRE-COOKED MEALS

The Villiage Table also cooks meals using fresh produce. Enjoy a night off cooking and support this community service by purchasing a ready-made home cooked meal.

**SUPPORT
LOCAL**

AT THE ASHFORD RURAL TRANSACTION CENTRE



LOW COST GROCERIES

EVERYONE WELCOME

This is just a sample of the many products available in store.

WEDNESDAY 2.30- 4.30PM | SUNDAY 2.30 - 4.30PM



Vegemite
150g
\$1



Canola Oil
750ml
\$1



Sanitary Pads
Libra **50c**



Special K
420g
\$2



Toothpaste
Oral B **\$1**



Soap
Palmolive **50c**



Fixodent
Denture Adhesive **10c**



Leggo's Sauces
Various Flavours **\$1.50**



Chicken Tonight
485g
\$2

SAT 19 – SUN 20 APR (EASTER)

BACK TO ASHFORD REUNION

Organised by The Ashford Business Council

PROGRAM

FRIDAY NIGHT

- Filipino Meal at TnJs Store
- Get Together at the Bowling Club

SATURDAY APRIL 19

FROM 8 AM

- Visitor Registration - Rural Transaction Centre

9 AM

- Welcome - Mr Michael Lewis - Rural Transaction Centre

10 AM

- Street Entertainment and Easter Hat Display - Albury Street
- Memory Lane, Art Display and Morning Tea at the Memorial Hall
- WW1 and WWII Service Display in the school building area
- School Tours departing school main office - 10am & 11am

11 AM

- Visit to Sunhaven 11am - 12 noon

12 NOON

- Lion's Club BBQ in McRae Park
- Visit to Ambulance Station 12 noon - 1pm

1 PM

- Kids Scavenger Hunt - McRae Park

2 PM

- Bowls at Ashford Bowling Club
- Memory Lane, Art Display and Afternoon Tea at the Memorial Hall

6PM ONWARDS

- Dinner 6pm - Bowling Club, followed by Trivia Night 7 - 9pm
- Dinner and Get Together 6pm - Ashford Show Society - Sports Oval

SUNDAY APRIL 20

7.30AM

- Bacon and Egg Rolls at Town Oval - Ashford Show Society

FROM 9AM

- Easter Egg Hunt - McRae Park
- Kids Activities - Sports Ground

10AM - 12.30PM

- Golf - Ambrose 9 holes - Ashford Golf Course

Please complete the Registration Form sent by mail and return to the Rural Transaction Centre (RTC) by 20th March (for catering purposes)

FOOD OPTIONS

FRIDAY NIGHT

- TnJs Store - Filipino Dinner (numbers limited)
- Bowling Club - roast, seafood basket, chicken ...
- RTC Cafe - eat in or take away
- Ampol Service Station - take away

SATURDAY

MORNING TEA

- Memorial Hall - Ashford P&C

LUNCH

- McRae's Park - Lion's Club BBQ
- TnJs Store
- Rural Transaction Centre Cafe

AFTERNOON TEA

- Memorial Hall - Ashford P&C

DINNER

- Bowling Club - Dinner and trivia night \$25 per head (numbers limited to 70)
- Sports Oval - Ashford Show Society - Hot pots and dessert - \$20 per adult, \$12 per child < 16

SUNDAY

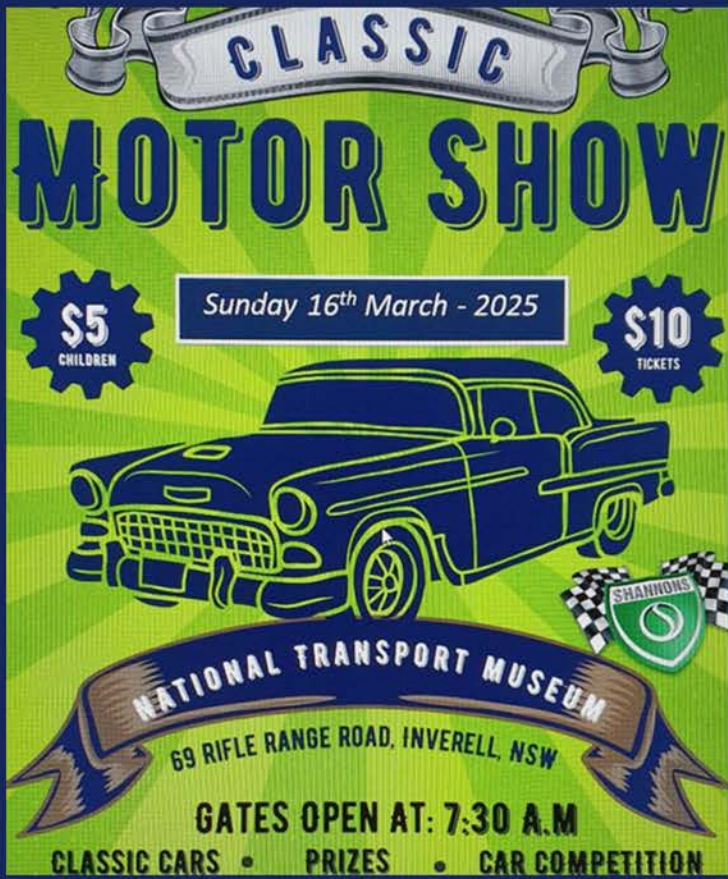
BREAKFAST

- Sports Oval - Ashford Show Society - Bacon and Egg Rolls

LUNCH

- Bowling Club - usual menu including a roast

Tea, coffee and drinks and other food will be available at TnJs Store and the Ampol Service Station throughout the weekend.



EVENTS

ASHFORD LOCAL ABORIGINAL LAND COUNCIL NOTICE OF ORDINARY / MEMERS MEETING

DATE: Tuesday, 1st April 2025
TIME: 12:30noon
PLACE: Ashford LALC – 25 Albury St Ashford

AGENDA:

1. Welcome/Apologies
2. Minutes of Previous Members Meeting
3. New Membership Applications
4. CEO Report
5. Financial Report
6. General Business
 - a. Proposed use of Ashford LALC land for livestock.
 - b. Update on the Ashford LALC name change to Kwiambal LALC.
 - c. Members to approve - Work Policy for LALC Board Members.



Lunch will be provided at 12.00.

All enquiries about this meeting should be directed to the Ashford LALC during office hours.



Position Vacant
REGISTERED NURSE
Sunhaven Hostel

We are looking for a person with a passion for caring for the clinical needs of our residents.

ESSENTIAL CRITERIA

- Current AHPRA registration
- Empathy and compassion for older people
- Commitment, punctuality, politeness and a great work ethic
- Current police check or willingness to obtain
- First Aid Certificate or willingness to obtain
- Up to date COVID19 vaccinations – not mandatory but recommended.

DESIRABLE

- Previous experience in an aged care environment
- IPC Lead Certification

If you require more information, please phone the Manager on 0267254223.

To apply, please send a cover letter and resume to:
The Manager
Sunhaven Hostel
10 Kneipp St
ASHFORD 2361
Or email: manager@sunhavenhostel.com.au

**Expression of Interest
CONTRACT CLEANER
Kwiambal National Park**

A Part Time Contract Cleaner for the Visitor Accommodation at Kwiambal National Park.

30 Minutes from Ashford. Flexible hours to suit operational requirements. Must have an ABN and insurance.

Please contact National Parks for more details and expression of interest:

Phone number – 02 6739 0700

Email – minyon.landerson@environment.nsw.gov.au

GLEN INNES FREE PARENTING EXPLOSIVE KIDS

Does your child:

- Show extreme behaviour?
- Have intense temper tantrums?
- Refuse to do what they are asked?
- Use verbal and physical aggression?

Parenting Explosive Kids shows parents how:

- To identify the child's concerns and triggers that cause the behaviour,
- To teach the child coping skills and
- To find workable solutions that satisfy both parent and child and lessen the likelihood of negative behaviour

FREE
help for
frustrated
parents

WHEN: Thursday 20th March 2025 - 9.30am to 2.30pm

WHERE: To be advised on registration

COST: FREE

**For more information or to register please call
Pedro on 6738 7200**



Ashford TENNIS CLUB



MEMBERSHIP

\$50 Adults - \$20 School Children

SOCIAL TENNIS

\$5 Key Deposit
(Refundable on Key Return)

\$5 Adults - \$3 Kids

Social tennis starting soon

HIRE OF COURTS

Contact Maree for arrangements.

President:	Gilbert Fitzhannim	0428 195 501
Vice President:	Mark Thorn	
Secretary:	Maree Akhurst	0438 294 646
Treasurer:	Leza Lockett	0458 404 765

.....



Anyone wishing to book Ashford Showgrounds for an event or simply wanting to contact The Showground Land Managers Trust, please contact the Secretary.

Secretary/Treasurer: Trevor Tindall
Ashford Show Grounds Statutory Land Manager
1276 Wallangra Road, Ashford NSW 2361
Email: rusty-tin@bigpond.com
Mobile: 0448 811 813

If the secretary can not be reached , please try David Thompson (President) on 0488 507 824.



Ashford Servo

**OPEN 7.00AM - 7.00PM
7 DAYS**

Hot Food ~ Coffee ~ Groceries
Meat & Veges ~ Lotto ~ Bait
Phone Credit ~ Bottle Shop

**NUMEROUS SPECIALS ON
SNACKS AND DRINKS**

CALL 02 6725 4070
FOR FOOD ORDERS OR ENQUIRIES

26 DUFF STREET, ASHFORD



Matthew & Sons Drilling Services

Matt has been drilling water bores since he was 10 years old. With 40 years experience and a NSW class 6 licence, he can handle most water bore drilling jobs.

We have 3 drill rigs and are experienced in rotary air, rotary mud, casing advance, cable tool (percussion) for gravels and artesian.

Located in Graman and Inverell

Call or text Matt 0418 362 968

Email:
matt@matthewandsons.com.au

Website:
matthewandsons.com.au

ABN: 28 157 677 391



Campbell & Freebairn
PHARMACY

ALBURY STREET, ASHFORD
PHONE 02 6725 4013

ALL HEALTH CARE NEEDS
DISTANCE DISPENSING SERVICE
BABY CARE & NUTRITION
WOUND CARE SUNGLASSES
HEALTH AND BEAUTY PRODUCTS

**ASHFORD
COMMUNITY
CHURCH**



Presbyterian Parish Office 02 6721 0511
Anglican Office Inverell 02 6722 3179

CHURCH SERVICES:

ALTERNATE SUNDAYS AT 9AM AT THE
PRESBYTERIAN OR ANGLICAN CHURCH

Service held bi-monthly in the Sunhaven
Activity Room



Jesus is moving. Jesus is present. Jesus is Lord.

ST PATRICKS CATHOLIC CHURCH

MASS TIMES:

EVERY 3RD SATURDAY 3:30PM

CHRISTMAS EVE MASS:

5:00PM TUESDAY DECEMBER 24

ENQUIRIES:

SACRED HEART PARISH

INVERELL 6722 1103

FR PAUL CHANDLER ADM

LOCAL CONTACT:

CATHY FOELZ 0427 879 595



ASHFORD POLICE

ASHFORD POLICE STATION PH 6721 8320
INVERELL POLICE STATION (24 HRS) PH 67220599
EMERGENCY 000 POLICE ASSISTANCE LINE 131 444

ACCESSING MEDICAL SERVICES IN ASHFORD

ASHFORD DOCTOR
Dr Abbas Hussein

Saturday Only
8.00AM : Blood Tests
8.30am - 3.00pm :
Appointments
Phone (SAT): 02 6726 2000

To make appointments please
phone Campbell and Freebairn
Ashford on 02 6725 4013.

CHEMIST
Campbell & Freebairn
Ashford

Open Monday to Friday
9am - 5pm

Closed for lunch between
12.30pm and 1.00pm daily.

Drop prescriptions in by
11.30am for afternoon
collection after 2.30pm.

HELPFUL PHONE NUMBERS
Community Health Centre Ashford
02 6726 2030

Texas Doctor: Dr Abbas Hussein
07 4653 1363

HACC - Ashford Home & Community Care
02 6725 4479

BLOOD TESTS

Blood tests are conducted every 2nd
Thursday at Community Health.
Phone 02 6726 2030

Duncan Coole
PAINTER & DECORATOR
BUILDING MAINTENANCE



Repaint Specialist

- Wall Papering
- Renovations
- Commercial
- Residential
- Insurance

Ph: 0428 437 848

Lic No: 158982C NSW Lic No 1104272 QLD
ABN: 69 041 866 798



**ASHFORD
MEMORIAL
BOWLING CLUB**

CATERING ON THURSDAY,
FRIDAY AND SATURDAY NIGHTS

FRIDAY NIGHTS | DINNER

5.30PM - 8.00PM

SATURDAY | LUNCH & DINNER

12.00PM - 2.00PM AND 5.00PM - 8.00PM

SUNDAY | LUNCH

12.00PM - 2.00PM

EFTPOS AVAILABLE
BOOKINGS FOR LARGE GROUPS DESIRABLE

PHONE
6725 4441 OR 6725 4202

WWW.ASHFORDBOWLING.CLUB
OFFICE@ASHFORDBOWLINGCLUB

JCS
RURAL CONTRACTING

SERVICES INCLUDE:
.....
Direct Drill Planting
Slashing
Boom and Spot Spraying
Offset Disc Ploughing
Earthmoving
Stock and General Freight
Contract Fencing

CONTACT JASON

☎ 0429 184 730

✉ jasnic988@bigpond.com

ABN: 42 843 421 019

**ALANA'S TRASH
& TREASURE
ASHFORD**



All money raised will be distributed
back into the community.
Donations of household and various
items welcomed.

OPEN TUESDAY & THURSDAY
10.30AM - 3.30PM
SATURDAY
10.30AM - 1.00PM

Enquiries: 0423 348 419

Looking forward to your support in the future!



FLAVOURS FROM ASIA

CHINA



SWEET & SOUR CHICKEN

Ingredient List:

- Sunflower or vegetable oil for frying
- 100ml soda water - Chilled
- 140g self raising flour
- 25g cornflour
- 4 skinless, boneless chicken breast cut into chunks
- spring onions finely shredded, to serve

For the Sauce:

- 1 red pepper deseeded and chopped into chunks
- 3 red chillies - 1 cut into chunks, 2 halved and deseeded
- 425g can pineapple - Chunks, drained and juice reserved.
- 4 star anise
- 50g tamarind paste
- 100g caster sugar
- 100ml rice wine vinegar or Chinese vinegar

Method:

- For the sauce, put the red pepper, chunks of chilli and pineapple juice in a pan and bring to the boil. Cover and cook for 10 mins, then purée in a food processor.
- Return to the pan with the pineapple chunks, chilli halves, star anise, tamarind, sugar and vinegar. Gently simmer for 20-30 mins until reduced and sticky. Keep warm, or reheat to serve.
- Fill a large pan 1cm deep with oil and heat until shimmering. Whisk the soda water and 100ml cold water into the self-raising flour with a little salt. Stir the batter well.
- Tip the cornflour onto a plate, line a tray with kitchen paper and turn on the oven to low. Dust the chicken with cornflour, then dip into the batter.
- One at a time, lower into the hot oil (about 5-6 every batch). Turn up the heat to keep the chicken frying, if needed, and cook for 5-6 mins, turning once.
- When cooked, drain on the tray, and keep warm in the oven. Repeat with the remaining chicken.
- Stack onto a plate with the warm sauce on the side, and scatter with shredded spring onions.



Answer: a hole!!

<http://www.bbcgoodfood.com/recipes/sweet-sour-chicken>