



ASHFORD CENTRAL SCHOOL NEWSLETTER

28
Feb
2025

IN THIS EDITION

Page 4 - P&C News

Page 5 - Kindergarten 2025

Page 6 - Swimming Carnival

Page 9 - STUDEC 2025

Page 10 - Ashford Show 2025

AROUND THE SCHOOL



UPCOMING EVENTS

WED MAR 5

Elevate Education Workshops

WED MAR 5-FRI MAR 7

STUDEC Camp - Green Valley

FRI MAR 7

Science and Engineering Challenge

MON MAR 10

Primary NW Swimming Trials

TUE MAR 11

Secondary NW Swimming Trials

WED MAR 12

NAPLAN starts for years 3, 5 and 7

FRI MAR 14

2025 Zone Rugby 7's Trials

TUE MAR 12 - MON MAR 24

NAPLAN -Year 3, 5 and 9

THU MAR 20

P&C Meeting at the Ashford Bowling Club



02 6725 4101



Ashford Central School



51 Martyn Street, Ashford NSW 2361



ashford-c.school@det.nsw.edu.au



<https://ashford-c.schools.nsw.gov.au/>



FROM THE PRINCIPAL

Welcome back to Ashford Central School for 2025. I hope that everyone had a safe, happy and enjoyable holiday period.

As parents and family members it may have seemed as if the school holidays went on forever. However, it's now time for our students to pull their sleeves up and get to work. They have hit the ground running with our teachers working hard to deliver curriculum at a suitable level for all of our students.

It has been fabulous to see all of our new Kindergarten students start their educational journey at Ashford Central School and dive into learning with Mr Cowley. I have spent some time in the Kindergarten classroom too and it has been enjoyable to get to know all of them and their personalities.

I would like to welcome a new staff member to our school, Miss Natasha Wynter. Natasha is our new English teacher and will be working with all grades 7 - 12. If you have any questions about your child's progress, please feel free to contact the school and make an appointment. Welcome Natasha, we look forward to working with you.

On Monday 17th February Mrs Alexander, together with Chloe Drysdale and Kaleia Macdonald travelled to Inverell for the U15s Touch Football trials. Our students played very well. Congratulations and well done. Thank you to Mrs Alexander for her ongoing support of sport at ACS.

We also had Mrs Sargeant take a group of students into Macintyre High School for the University Showcase. This was a great opportunity for our students to speak with universities about the options that are available in the future. Mrs Sargeant reported that the students had a great outing and gained some great insights into their future options. Thank you to Mrs Sargeant for her organisation of this excursion.

Last Tuesday we held our annual Swimming Carnival at the Ashford Swimming Pool. It was a beautiful day with the weather being kind and not getting too hot. Our students did a great job and participated in a lot of events. Congratulations to all of our race winners and age champions, you all competed with a great attitude. It made me extremely proud to see how our older students supported our younger students to participate in races in the big pool. This support is why I love working at Ashford Central School, it is the supportive environment that fosters friendship and sharing the learning journey with other community members.



On Wednesday afternoon last week, our Ashford Central School P and C held their first meeting of the year at the Ashford Bowling Club. They would love some new members to help out with the organisation of events and have input towards supporting our great school. If you can give some time to help out it would be much appreciated.

Last Thursday I had the absolute pleasure of being the emcee for the STUDEC Induction Assembly. It was great to induct all of our elected members for 2025. We had a number of parents and family members who were able to attend and stay back for morning tea afterwards. Being elected as a representative of your school is such an honour and we look forward to seeing the input from them this year. Their formal duties will begin next week when they attend the Leadership camp at Green Valley Farm. They will hold discussions about leadership as well as plan out all of their events for 2025. Well done to all of these students and thank you to the parents and family members who were able to attend the assembly.

Last Friday four of our primary students qualified for, and competed at, the Inverell Zone Swimming Trials at Warialda Swimming Pool. All of the swimmers were able to gain personal best times in their events with two of our swimmers qualifying for the regional trials. Congratulations to Kytiana Irving and Letti Irving on reaching the regional trials, we are extremely proud of you.

Last weekend the Ashford Show Society held the Ashford Show. We had a number of our students who were stewards in the pavilion and they all did a remarkable job. They took entries, sorted them into categories, worked with judges and placed ribbons and certificates onto the winners and place getters. I was so proud to have a number of community members seek me out to tell me what an amazing job they all did. Well done to each and everyone of them. Their sense of community and giving back is inspirational and I also hope that it can become contagious.

Our Yrs 3 - 6 students participated in cyber safety sessions this week. These were to help students to navigate the risks associated with playing games online and ensuring that they navigate the internet safely. Thank you to Mr Simpson for his organisation.

As always, if you would like to arrange a time to meet with your child's teacher, please feel free to contact the front office to make a suitable time to meet with them. We always value your input into your child's learning and share the same goal of seeing them succeed.

Mr Wrobel





P&C MEETING

Our first P&C Meeting for the year took place on Wednesday, 19th February. We had a busy meeting with lots to talk about, including :

- The P & C will continue to support students by subsidising Years 6, 10, 11 and 12 jumpers and shirts.
- The P & C will be supporting the Ashford Easter Reunion by hosting morning and afternoon tea in the hall on Easter Saturday. CAKES, SLICE AND BISCUIT DONATIONS APPRECIATED!
- Show entries by ACS students will once again be paid for by the P & C.
- New representative uniforms for sport, new saddle cloths for horse sports and new ties all on the way, will be provided by the P & C, watch this space!
- New rowing machine for the school gym will be purchased by the P & C
- Year six shirts can be worn on Fridays. Year ten and NAIDOC shirts can be worn any day, but never for excursions unless otherwise stipulated.
- P&C meetings will be held on the second and eighth Thursday of every term at the Ashford Bowling Club from 4pm onwards.
- Anzac Day poll, please see the Ashford Central School P & C Facebook page to cast your vote - would you like to see a change or stick with tradition?
- Please join us at our next General meeting, and AGM to discuss these and other matters important to your child and community.

Next P&C Meeting

Thursday, 20th March
4:00pm at the Ashford Bowling Club

Pizza and Garlic Bread will be provided

All Are Welcome !!!

HOUSE CAPTAINS 2025

Macintyre:

Captain: Tayla Stevens
Vice Captain: Stuart Bradley

Severn:

Captain: Peter Dedula
Vice Captain: Jaidean Connors

Fraser:

Captain: Lexi Martinez
Vice Captain: Michayla Schneider



KINDERGARTEN 2025

Kindergarten have had an energetic start to their first week at school. On the 18th of February, kindergarten partook in their first swimming carnival, resulting in many smiles and laughs. Kindergarten at school have been learning about school rules, routines in and out of the classroom as well as key concepts such as phoneme and grapheme awareness.

I cannot wait to watch kindergarten grow and learn as the year goes on!

Mr Rohan Cowley





SWIMMING CARNIVAL

Ashford Central School's Swimming Carnival took place at the Ashford Pool on Tuesday, 18th February. It was a wonderful day of sun, swimming, laughter and fun. Congratulations to the following winners:

- Primary Junior Boy Champion: Thomas Grabham
- Primary Junior Girl Champion: Kytiana Irving
- Primary 11 Years Boy Champion: Izayah Allen
- Primary 11 Years Girl Champion: Letti Irving
- Primary Senior Boy Champion: Leighton Stevens
- Primary Senior Girl Champion: Arya Green

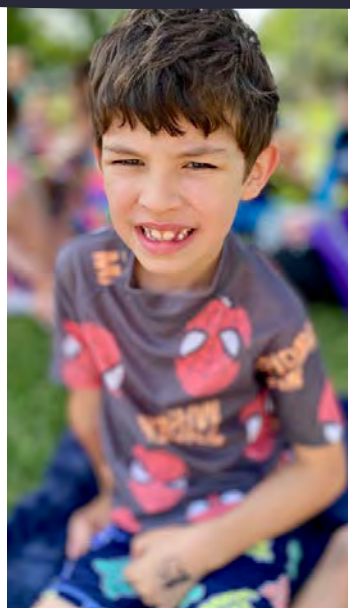
- Secondary Junior Boy Champion: Brendon Schneider
- Secondary Junior Girl Champion: Zarleah Gleeson
- Secondary Senior Boy Champion: Duncan Crafar
- Secondary Senior Girl Champion: Chloe Drysdale
- Secondary Opens Boy Champion: Flynn Cook
- Secondary Opens Girl Champion: Michayla Schneider

The winning House for 2025 is Fraser.



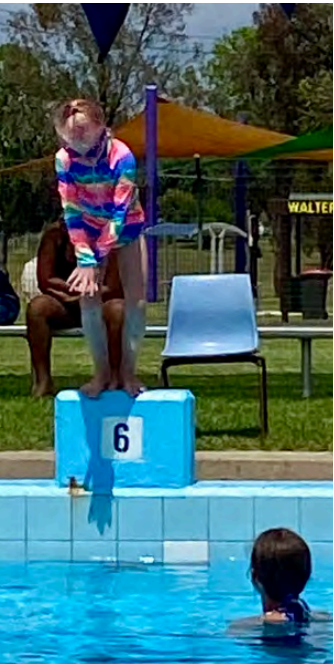


SWIMMING CARNIVAL





SWIMMING CARNIVAL





STUDEC 2025

Ashford Central School is proud to introduce our STUDEC for 2025!!

School Captain: Tiarnie Batty

Vice Captain: Esther Wright

Primary Captain: Arya Green

Primary Vice Captain: Codie Morley

Year 3: Bryce Irwin and Bonnie Sara

Year 4: Savannah Batty and Emmily Morley

Year 5: Thomas Grabham and Leighton Stevens

Year 6: Jason Whalley and Johnathan Hillhouse

Year 7: Kurt Charles and Sam Baker

Year 8 Joy Doney and Claye Lavender

Year 9: Sarah Strohfeldt and Charlee-Rae Johnson-Nguyen

Year 10: George Rogers and Bailey Foelz

Year 12: Lexi Martinez and Michayla Schneider

Congratulations!





ASHFORD SHOW 2025

Ashford Show for 2025 was a huge success. Congratulations to all participating and winning students. All your art works were amazing!

Thank you to Brendon Schneider, Sam Baker, Duncan Crafar, Lexi Martinez, Claye Lavender, Esther Wright, Tiarnie Batty, Annah Smith and Makeely Hancock, our wonderful volunteers, who helped ensure that the show will run smoothly, we really appreciate your help!!



Our Wonderful Volunteers for the Ashford Show





Bailey Foelz - Junior Art Champion



Sophie Whalley - Highly Commended



Joel Dehn - Primary 2nd Place



Tiarnie Batty - High School 2nd Place



Jacob Hillhouse - Primary 3rd Place



Hunter Ryan - Primary 1st Place



Infants - Mikayla Lazar Brown 1st Place, Theo Boyd 2nd Place, Jaxon Charles 3rd Place



TOP SCHOOL ATTENDERS

Congratulations to the following students for achieving above the state average of 92% attendance.

CONGRATULATIONS!

Kymarni ALLEN	Flynn COOK	Bryce IRWIN	Mia STEWART
Leroy ALLEN	Kane COOMBES	Hamish IRWIN	Nina SUNDERLAND
Alaynah ARCHER	Lillie-Anne DELL	Charlie LARFIELD	
Lincoln ARCHER	Madeline THOMAS	Harriette THOMAS	
Sam BAKER	Izaiah DEVER	Jack MACKAY	
Indigo BATTY	Adam DONEY	Lucas MACKAY	
Lachlan BATTY	Joy DONEY	Lexi MARTINEZ	
Savarnah BATTY	Mae DONEY	Colt MURPHY	
Tiarnie BATTY	Eve EDWARDS	Hailee-Mae MURPHY	
Miriana BLOGG	Bailey FOELZ	Jack MURPHY	
Theo BOYD	Zarleah GLEESON	Mia MURPHY	
Stuart BRADLEY	Ella GRABHAM	Sophie RODDA	
Alyna BRIGGS	Thomas GRABHAM	Xavier ROLLINSON	
Jaxon CHARLES	Arya GREEN	Axel RYAN	
Kurt CHARLES	Scarlett HALLORAN	Ryley RYAN	
Zane CHARLES	Kytiana IRVING	Bonnie SARA	
Deacon COLLISON	Leonard IRVING	Ruby TAYLOR	
Jaidean CONNORS	Letti IRVING	Tayla STEVENS	

Your Wellbeing Nurse

You can talk to your wellbeing nurse about:

- health and wellbeing concerns
- healthcare options
- finding health and community services.

Any student enrolled at a school with a wellbeing nurse and their family members can get support from a wellbeing nurse.

Parents

- Contact the school to ask to see or speak to the wellbeing nurse
- Let a teacher or the school learning and support team know you would like to see the wellbeing nurse.

Students 14 years and older

- Let a teacher or the school learning and support team know you would like to see the wellbeing nurse
- Approach the wellbeing nurse directly to speak with them privately.

Your wellbeing nurse is at the school on
4/3, 19/3, 2/4

Contact your wellbeing nurse
Rebecca Collyer
0457681867

Your wellbeing nurse is a highly skilled registered nurse from NSW Health.

Your wellbeing nurse helps students and their family get health and wellbeing support.



Visit www.health.nsw.gov.au/whinprogram or scan the QR code for further information about wellbeing nurses.



Wellbeing and Health In-reach
Nurse Coordinator program



Rebuilding Public Education

NSW Department of Education

Ashford Central School
Project update | February 2025

Investing in our schools

As part of the NSW Government's plan to rebuild public education, the 2024-25 Budget is delivering record education funding, including \$1.5 billion for maintenance and local upgrades.

Ashford Central School facilities upgrade

As part of this investment, Ashford Central School will receive a share of \$4.2 million funding allocated to local schools to upgrade learning and teaching facilities.

The allocation will be spent on installing 4 extra air conditioning units in the Building B food technology classroom.

This work is expected to be completed by April.

More information

If you have any questions about this project, please contact the NSW Department of Education during business hours on the contact details below.



Email: schools@education.nsw.gov.au
Phone: 1300 482 651
www.schools@education.nsw.gov.au





STAR TICKET CANTEEN VOUCHER WINNERS

CONGRATULATIONS

Kinder	N/A	N/A
1/2	N/A	N/A
3/4	N/A	N/A
5/6	N/A	N/A
Secondary	Ford Ngatamariki	Lilly Taylor

Star tickets are token rewards that are handed to students displaying positive behaviour in any setting to reinforce expectation. It is the students responsibility for placing the completed star ticket into their allocated star ticket box, which is located in the Ashford Central School Library. Tickets are drawn out of the star ticket box by the teacher at fortnightly assembly.

TOP MERIT AWARD RECIPIENTS

PRIMARY

SECONDARY

Duncan Crafar
 Stuart Bradley
 Charlee-Rae Johnson-
 Nguyen
 Chloe Drysdale
 Makeely Hancock
 Bailey Foelz
 Tiarnie Batty
 Sophiee Whalley
 Joy Doney
 Kaleia MacDonald
 Joe Beveridge
 Brendon Schneider

Happy Birthday to our students who celebrated their birthday recently:

Rubin Stewart	Emmily Morley
Emmaleen Boney	Adam Doney
Johnathan Hillhouse	Joel Dehn
Leighton Stevens	Xavier Rollinson
Thomas Grabham	Claye Lavender
Alaynah Archer	Tyler Schumann
Isabelle Williams	Zane Charles
Allakae Hillhouse	Duke Beveridge
Kane Coombes	Madeline Thomas
Bailey Foelz	Annah Smith
Eve Edwards	Noah Ryan

ASHFORD CENTRAL SCHOOL CANTEEN MENU

Term 1, 2025



SANDWICHES

Cheese or vegemite or jam	\$3
Chicken or ham or egg	\$4
Egg and lettuce	\$5
Chicken, lettuce + mayonaise	\$5
Chicken or ham + salad	\$6
Toasted cheese	\$4
Toasted ham + cheese	\$4
Toasted spaghetti	\$4

WRAPS

Chicken, lettuce and mayoniase	\$5
Chicken or ham + salad	\$6
Chicken caesar salad	\$6

HOT FOOD

Cheese Muffin	\$1.50
Muffin pizza	\$2
Hash brown	\$2
Fried Rice	\$4
Cheeseburger	\$4.50
Chicken tender slider	\$4.50
Spaghetti bolognese	\$5
Savoury mince & rice	\$5
Taco bowl with corn chips	\$5.50
Chicken korma & rice	\$6.50
Hamburger	\$7

SALADS

Garden Salad	\$4.50
Garden Salad with chicken	\$6.00
Garden Salad with ham	\$6.00
Chicken caesar salad + egg	\$6.00

SNACKS

Orange	\$1
Apple	\$1
Rockmelon cup	\$1
Watermelon cup	\$1
Custard	\$1
Yoghurt - berry or vanilla	\$1
Pikelet and jam	\$1
Brownie GF	\$1
Fruit Cake	\$1

SPECIALS

Tuesday - rice paper wrap	\$4.50
Wednesday - sushi	\$4
Thursday - Hot dog	\$5
Friday - Plain pie	\$5.50
Sauce - BBQ or Tomato	50c

DRINKS

200ml 100% Juice Popper	\$2
300ml water	\$1
600ml water	\$2
300ml strawberry milk	\$2
300ml chocolate milk	\$2
300ml chocolate milk	\$2
Smoothie - berry or mango or banana	\$5

DRINKS - SECONDARY ONLY

500ml strawberry milk	\$3.50
500ml chocolate milk	\$3.50
500ml vanilla malt milk	\$3.50
500ml caramel milk	\$3.50

- EFTPOS AVAILABLE
- ORDER ONLINE VIA SENTRAL APP FROM WEEK 3
- ORDERS MUST BE PLACED BY 9.30 AM EACH DAY



Service NSW

We're coming to your community



We're bringing NSW Government services to:
Ashford

Wednesday, 5 March 2025


10AM - 3PM

Visit our Mobile Service Centre to access services like:

- Driver Knowledge Tests
- driver licence, mobility parking and photo card applications
- Working with Children Checks
- NDIS Worker Checks
- birth, death and marriage certificates
- cost of living support and more.

Call **13 77 88** or visit service.nsw.gov.au to check our latest timetable.

Severe weather may mean our timetable has to change at short notice, we strongly recommend you check on the day.

 **Find us at:**
School Tennis Courts
39 Albury Street



RIDDLE

Of the Week

I have branches, but no fruit, trunk or leaves. What am I?

Answer on the back page

UPCOMING COMMUNITY EVENTS

FRI FEB 28 - SAT MAR 1

Inverell show

WED MAR 5

Service NSW will be coming to Ashford between 10am-3:00pm.

School Tennis Courts 39 Albury Street

FRI MAR 7 - SUN MAR 9

Minerama, Fossicking, Gem & Jewellery Show
Glen Innes Showground

SAT MAR 8

Women's Day Morning Tea
Inverell Art Gallery, 10:00am

SUN MAR 9

Inverell Swap Meet Market at the Inverell Show Ground. 6:00am-5:00pm.

SAT MAR 15

Teddy Bear's Picnic at McRAE Park in Ashford. A community event including entertainment and food for the whole family.
10:00am - 4:00pm.

SAT MAR 15

Multicultural Food Festival combined with the Grafton to Inverell Finish Line celebrations.
Victoria Park, Inverell, starting 10:30am.

SUN MAR 16

Inverell Classic Motor Show
At the National Transport Museum, Gates open 7:30am

To have your community event or news listed on this page, please contact the school.

 **02 6725 4101**

 **ashford-c.school@det.nsw.edu.au**



TEDDY BEAR'S PICNIC

FREE COMMUNITY EVENT

**Saturday, 15th March
McRAE Park Ashford
10:00AM-4:00PM**

ENTERTAINMENT FOR ALL AGES

*Best decorated push bike
Jumping castle
Raffles
Trains
Yabbie racing
Games, novelty events & stall holders
Sausage sizzle, hot chips and cold drinks*

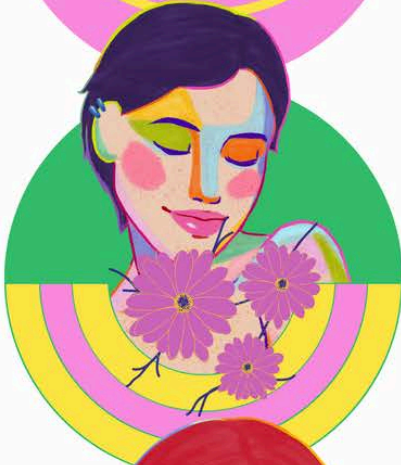
TEDDY BEAR COMPETITION

*Best dressed bear; Biggest bear;
Most loved bear;
Categories: juniors/open/seniors*



**Supported by Inverell & Inverell MacIntyre, Ashford, Bundarra, Glen Innes & Glen
Innes Highlands Lions Clubs
Sponsored by Print Anything**

Today is a day to celebrate the women of Ashford!



**YOU ARE INVITED TO A FREE
AFTERNOON TEA TO CELEBRATE
WOMEN IN ASHFORD**

DELICIOUS FOOD ~ REFRESHING DRINKS
UPLIFTING CONVERSATIONS ~ KIDS WELCOME

**EVERY REGISTERED WOMAN
WILL RECEIVE
A FREE GIFT**



Sat 8th March - 3pm

BOWLING CLUB, ASHFORD NSW 2361

**TO RECEIVE YOUR FREE GIFT
RVSP BY TELEPHONE OR SMS
TO 0400 68 13 68**



Gift packs may include baby products, sanitary products, beauty products, homewares and other gifts tailored to the age of each woman attending.

Let us help each other to face barriers and challenges, creating a world where every women and girl has the opportunity to fulfill her potential.

Here's to all the incredible women - THIS WORLD IS A BETTER PLACE BECAUSE OF YOU!

CLASSIC
MOTOR SHOW

Sunday 16th March - 2025

\$5 CHILDREN
\$10 TICKETS



NATIONAL TRANSPORT MUSEUM
 69 RIFLE RANGE ROAD, INVERELL, NSW

GATES OPEN AT: 7:30 A.M

CLASSIC CARS • PRIZES • CAR COMPETITION




Multicultural Festival

- MULTICULTURAL FOOD • MARKET STALLS •
- LIVE MUSIC • GUEST PERFORMANCES •
- FINISH PRECINCT OF THE GRAFTON TO INVERELL CYCLE RACE •

SATURDAY, 15 MARCH 2025 | VICTORIA PARK, INVERELL | 11:00AM - 2:00PM



EVENTS



INTERNATIONAL WOMEN'S DAY MORNING TEA

8TH MARCH, 2025

 Inverell Art Gallery, 5 Evans St

 10:00am

 \$20 from TryBooking*
www.trybooking.com/CZJXA

Hosted by:
 Mayor, Cr Kate Dight
 Deputy Mayor, Cr Jo Williams
 Cr Fiona Brown
 Cr Wendy Wilks




THE PIONEER VILLAGE VINTAGE TRACTOR SHOW WITH TRACTOR PULL DEMONSTRATIONS

ENTRY \$10 PER FAMILY FOR THE WEEKEND
29TH AND 30TH MARCH 2025
AT PIONEER VILLAGE
9:00AM - 5:00PM

*Tickets also available at Inverell Visitor Information Centre.
 Ticket sales close 4pm Monday 3rd March





Position Vacant
REGISTERED NURSE
Sunhaven Hostel

We are looking for a person with a passion for caring for the clinical needs of our residents.

ESSENTIAL CRITERIA

- Current AHPRA registration
- Empathy and compassion for older people
- Commitment, punctuality, politeness and a great work ethic
- Current police check or willingness to obtain
- First Aid Certificate or willingness to obtain
- Up to date COVID19 vaccinations – not mandatory but recommended.

DESIRABLE

- Previous experience in an aged care environment
- IPC Lead Certification

If you require more information, please phone the Manager on 0267254223.

To apply, please send a cover letter and resume to:
The Manager
Sunhaven Hostel
10 Kneipp St
ASHFORD 2361
Or email: manager@sunhavenhostel.com.au

**Expression of Interest
CONTRACT CLEANER
Kwiambal National Park**

A Part Time Contract Cleaner for the Visitor Accommodation at Kwiambal National Park.

30 Minutes from Ashford. Flexible hours to suit operational requirements. Must have an ABN and insurance.

Please contact National Parks for more details and expression of interest:

Phone number – 02 6739 0700

Email – minyon.landers@environment.nsw.gov.au

Mental Health Services and Support

Beyond Blue

24/7 mental health support service

1300 22 4636
beyondblue.org.au

headspace

Online support and counselling to young people aged 12 to 25

1800 650 890
(9am to 1am daily)

For webchat, visit:
headspace.org.au/
[headspace](http://headspace.org.au/)

Kids Helpline

24/7 crisis support and suicide prevention services for children and young people aged 5 to 25

1800 55 1800
kidshelpline.com.au

1800 RESPECT

24/7 support for people impacted by sexual assault, domestic violence and abuse

1800 737 732
1800respect.org.au

QLife

LGBTI peer support and referral

1800 184 527
(3pm to midnight daily)

qlife.org.au
(online chat 3pm to midnight local time, including over holidays.)

Lifeline

24/7 crisis support and suicide prevention services

13 11 14
lifeline.org.au

Suicide Call Back

24/7 crisis support and counselling service for people affected by suicide

1300 659 467
suicidecallbackservice.org.au

Mensline

24/7 counselling service for men

1300 78 99 78
mensline.org.au

13YARN

24/7 crisis support for Aboriginal and Torres Strait Islander people

13 92 76
13yarn.org.au



If you are concerned about someone at risk of immediate harm, call 000 or go to your nearest hospital emergency department.

SATURDAY 19TH - SUNDAY 20TH APRIL 2025 (EASTER)

BACK TO ASHFORD REUNION

Organised by The Ashford Business Council



PLANNING IS WELL UNDERWAY FOR OUR BACK TO ASHFORD REUNION

The Ashford Business Council have been working hard to organise our Back to Ashford Reunion next Easter.

At this early stage the program will include an Easter Hat Parade, street stalls, memory lane in the school hall, morning tea, golf and bowls games, kids activities including a scavenger hunt on bikes, trivia night with dinner, a raffle, and many more activities to be confirmed.

The Ashford Central School, P&C, Bowling Club, Golf Club, Aboriginal Land Council and the Lions Club, are all on board to make this event the best it can be.

Gather up your Ashford memorabilia and art works /textiles for the historical display and art exhibition in the hall!!!

We set up an 'Event' on the Ashford NSW Facebook page, please register 'Going' if attending

IDEAS AND
INPUT ARE
WELCOME

Please Contact:

Rosemary Gordon
0493094837

OR

Leeanne Vickers
0428254058

Or Email
ashfordcelebrations@gmail.com



Ashford TENNIS CLUB



MEMBERSHIP

\$50 Adults - \$20 School Children

SOCIAL TENNIS

\$5 Key Deposit
(Refundable on Key Return)

\$5 Adults - \$3 Kids

Social tennis starting soon

HIRE OF COURTS

Contact Maree for arrangements.

President:	Gilbert Fitzhannim	0428 195 501
Vice President:	Mark Thorn	
Secretary:	Maree Akhurst	0438 294 646
Treasurer:	Leza Lockett	0458 404 765

.....



ASHFORD SHOWGROUND STATUTORY LAND MANAGERS

Anyone wishing to book Ashford Showgrounds for an event or simply wanting to contact The Showground Land Managers Trust, please contact the Secretary.

Secretary/Treasurer: Trevor Tindall
Ashford Show Grounds Statutory Land Manager
1276 Wallangra Road, Ashford NSW 2361
Email: rusty-tin@bigpond.com
Mobile: 0448 811 813

If the secretary can not be reached , please try David Thompson (President) on 0488 507 824.



Ashford Servo

**OPEN 7.00AM - 7.00PM
7 DAYS**

Hot Food ~ Coffee ~ Groceries
Meat & Veges ~ Lotto ~ Bait
Phone Credit ~ Bottle Shop

NUMEROUS SPECIALS ON SNACKS AND DRINKS

CALL 02 6725 4070
FOR FOOD ORDERS OR ENQUIRIES

26 DUFF STREET, ASHFORD



Matthew & Sons Drilling Services

Matt has been drilling water bores since he was 10 years old. With 40 years experience and a NSW class 6 licence, he can handle most water bore drilling jobs.

We have 3 drill rigs and are experienced in rotary air, rotary mud, casing advance, cable tool (percussion) for gravels and artesian.

Located in Graman and Inverell

Call or text Matt 0418 362 968

Email:
matt@matthewandsons.com.au

Website:
matthewandsons.com.au

ABN: 28 157 677 391



Campbell & Freebairn
PHARMACY

ALBURY STREET, ASHFORD
PHONE 02 6725 4013

ALL HEALTH CARE NEEDS
DISTANCE DISPENSING SERVICE
BABY CARE & NUTRITION
WOUND CARE SUNGLASSES
HEALTH AND BEAUTY PRODUCTS

**ASHFORD
COMMUNITY
CHURCH**



Presbyterian Parish Office 02 6721 0511

Anglican Office Inverell 02 6722 3179

CHURCH SERVICES:

ALTERNATE SUNDAYS AT 9AM AT THE
PRESBYTERIAN OR ANGLICAN CHURCH

Service held bi-monthly in the Sunhaven
Activity Room



Jesus is moving. Jesus is present. Jesus is Lord.

ST PATRICKS CATHOLIC CHURCH

MASS TIMES:

EVERY 3RD SATURDAY 3:30PM

CHRISTMAS EVE MASS:

5:00PM TUESDAY DECEMBER 24

ENQUIRIES:

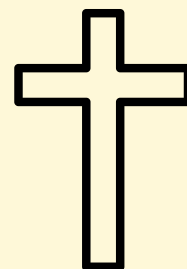
SACRED HEART PARISH

INVERELL 6722 1103

FR PAUL CHANDLER ADM

LOCAL CONTACT:

CATHY FOELZ 0427 879 595



ASHFORD POLICE

ASHFORD POLICE STATION PH 6721 8320
INVERELL POLICE STATION (24 HRS) PH 67220599
EMERGENCY 000 POLICE ASSISTANCE LINE 131 444

ACCESSING MEDICAL SERVICES IN ASHFORD

ASHFORD DOCTOR
Dr Abbas Hussein

Saturday Only
8.00AM : Blood Tests
8.30am - 3.00pm :
Appointments
Phone (SAT): 02 6726 2000

To make appointments please
phone Campbell and Freebairn
Ashford on 02 6725 4013.

CHEMIST
Campbell & Freebairn
Ashford

Open Monday to Friday
9am - 5pm

Closed for lunch between
12.30pm and 1.00pm daily.

Drop prescriptions in by
11.30am for afternoon
collection after 2.30pm.

HELPFUL PHONE NUMBERS
Community Health Centre Ashford
02 6726 2030

Texas Doctor: Dr Abbas Hussein
07 4653 1363

HACC - Ashford Home & Community Care
02 6725 4479

BLOOD TESTS
Blood tests are conducted every 2nd
Thursday at Community Health.
Phone 02 6726 2030

Duncan Coole PAINTER & DECORATOR BUILDING MAINTENANCE

Repaint Specialist



- Wall Papering
- Renovations
- Commercial
- Residential
- Insurance

Ph: 0428 437 848

Lic No: 158982C NSW Lic No 1104272 QLD
ABN: 69 041 866 798



ASHFORD MEMORIAL BOWLING CLUB

CATERING ON THURSDAY,
FRIDAY AND SATURDAY NIGHTS

FRIDAY NIGHTS | DINNER

5.30PM - 8.00PM

SATURDAY | LUNCH & DINNER

12.00PM - 2.00PM AND 5.00PM - 8.00PM

SUNDAY | LUNCH

12.00PM - 2.00PM

EFTPOS AVAILABLE

BOOKINGS FOR LARGE GROUPS DESIRABLE

PHONE

6725 4441 OR 6725 4202

WWW.ASHFORDBOWLING.CLUB
OFFICE@ASHFORDBOWLINGCLUB



JCS

RURAL CONTRACTING



SERVICES INCLUDE:
.....

- Direct Drill Planting
- Slashing
- Boom and Spot Spraying
- Offset Disc Ploughing
- Earthmoving
- Stock and General Freight
- Contract Fencing



CONTACT JASON

📞 0429 184 730

✉️ jasnic988@bigpond.com

ABN: 42 843 421 019

ALANA'S TRASH & TREASURE ASHFORD



All money raised will be distributed
back into the community.
Donations of household and various
items welcomed.

OPEN TUESDAY & THURSDAY

10.30AM - 3.30PM

SATURDAY

10.30AM - 1.00PM

Enquiries: 0423 348 419

Looking forward to your support in the future!



FLAVOURS FROM ASIA

Thailand



PAD THAI

Ingredient List:

- 250g packet rice stick noodles
- 2 tbsp lime juice
- 2 tbsp fish sauce
- 2 tbsp brown sugar
- 2 tbsp peanut oil
- 2 chicken breast fillets, thinly sliced
- 500g green prawns, peeled, deveined
- 3 green onions, thinly sliced diagonally
- 2 small red chillies, deseeded, finely chopped
- 2 Coles Australian Free Range Eggs, lightly beaten
- 1 cup bean sprouts, tails removed
- 1/4 cup roasted peanuts, finely chopped, optional
- 1/2 cup coriander leaves
- lime wedges, to serve



Method:

- Place noodles into a heat-proof bowl. Cover with hot water. Stand until tender. Drain. Rinse under cold water.
- Combine lime juice, fish sauce and sugar in a jug. Whisk with a fork to combine.
- Heat a wok over high heat. Add oil. Swirl to coat. Add chicken. Stir-fry for 2 minutes until golden. Add prawns, onions and chillies. Stir-fry for 2 to 3 minutes or until prawns turn pink. Add noodles. Stir-fry for 2 minutes.
- Add lime juice mixture to wok. Toss to combine. Slowly pour eggs over noodles. Stir-fry for 1 minute. Add sprouts. Toss well.
- Spoon pad Thai onto plates. Sprinkle with peanuts and coriander leaves. Serve with lime wedges.



<https://www.taste.com.au/recipes/pad-thai05051bde-860e-4a63-9736-f7f2df7eb7fc>