



# ASHFORD CENTRAL SCHOOL NEWSLETTER

22  
Mar  
2024

## IN THIS EDITION

Page 4 - Creative Arts News

Page 6 - Outdoor Recreation

Page 7 - Sewing Group

Page 8 - Science & Engineering Challenge

## AROUND THE SCHOOL



## UPCOMING EVENTS

### THU MAR 28

Easter Hat Parade and Egg Hunt for school students, preschool kids, parent and community.  
12:00noon start at the Cola.

### FRI MAR 29

Good Friday Public Holiday

### MON APR 1

Easter Monday Public Holiday

### TUE APR 2

STUDEC Colour Run

### WED APR 3

Year 7 & 10 Immunisations - Please make sure that you have signed your child up online.

### THU APR 4

Principal's Assembly

### FRI APR 5

Rewards Day

### MON - WED APR 8-10

Ozfish - Youth River Rangers For Secondary Students

### THU APR 11

Whole school photo day

### FRI APR 12

Last day of Term 1

 02 6725 4101

 Ashford Central School

 51 Martyn Street, Ashford NSW 2361

 ashford-c.school@det.nsw.edu.au

 <https://ashford-c.schools.nsw.gov.au/>





## FROM THE PRINCIPAL

We are rocketing through the term with a number of outstanding learning experiences offered to our fabulous students. Our teachers are focusing on providing engaging lessons everyday.

We held our first Ashford Aboriginal Education Consultative Group (AECG) meeting last week. Items on our agenda included, planning all future meetings for 2024, discussing upcoming events and sharing the structure of our meetings and how we can improve in the future. If you are wanting to attend, our next meeting will be held Tuesday 2nd April.

Once again, Mr Pintus has been out and about with our Year 9 and 10 students, providing practical hands on lessons with important life skills. We look forward to the students sharing their experiences every week.

Mrs Lockett's after school sewing group has been an outstanding success with sessions running fortnightly and supported by community members Jenny Blackie and Tiarna Beveridge. This is a great opportunity for students to learn a new skill, engage in great conversation, share their knowledge and give back to their community and other communities, through the gift of giving.

All of our Year 3, 5, 7 and 9 students have participated in NAPLAN over the last two weeks. This learning data is collected and used to identify areas of need for our students. It informs planning for teachers and our school. We hope that the tests weren't too stressful.

Last Friday, we had a visit from the Inverell High School Clontarf Academy. Their visit was to provide an opportunity for their students to practice the skills they had learned. They had been learning how to run coaching session during PDHPE and they worked with our primary classes to hone their skills. We thank them for sharing their knowledge and skills with our students.

Our school has always had an excellent relationship with our preschool. Soon our Wednesday preschool students will be coming to our Library for borrowing lessons each fortnight. Thank you to Mrs Grabham and Mrs Blake for their support of this initiative. We look forward to seeing our neighbours joining us at 'big school'.

On Thursday 21st March our school celebrated Harmony Day. It was lovely to see a splash of orange in the playground and hear discussions around getting along with others and inclusivity. Thank you to Mrs Foley in the office for making fabulous stickers for our staff to wear on the day.





On Wednesday 20th March our staff participated in an extended staff meeting after school. The focus of the staff meeting was to begin planning our 2024 - 2027 School Plan. We held great discussions around the needs of our school and the specific areas that we want to focus on for the next four years. Our staff have identified three focus areas and over the next few weeks we look forward to putting a survey together and asking for community feedback. We are hoping to send out the survey prior to the end of term to allow everyone to have the opportunity to be consulted with. Once again, we will offer a voucher to a local business for those who participate to go into a draw. When the survey is ready, we will send out a link to all families.

On Thursday, our senior students who participate in Distance Education subjects had a visit from their teachers from Southern Cross Distance Education. This allowed our students to meet with their teachers and develop a stronger learning relationship.

Remember, if you have any questions for your child's teacher, please feel free to contact the school and organise a time for a meeting or a phone call to discuss how we could further meet their needs.

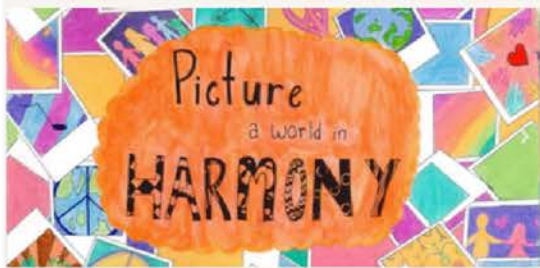






## ART COMPETITION TIME

Harmony Day Poster Competition – Due Friday 12th April



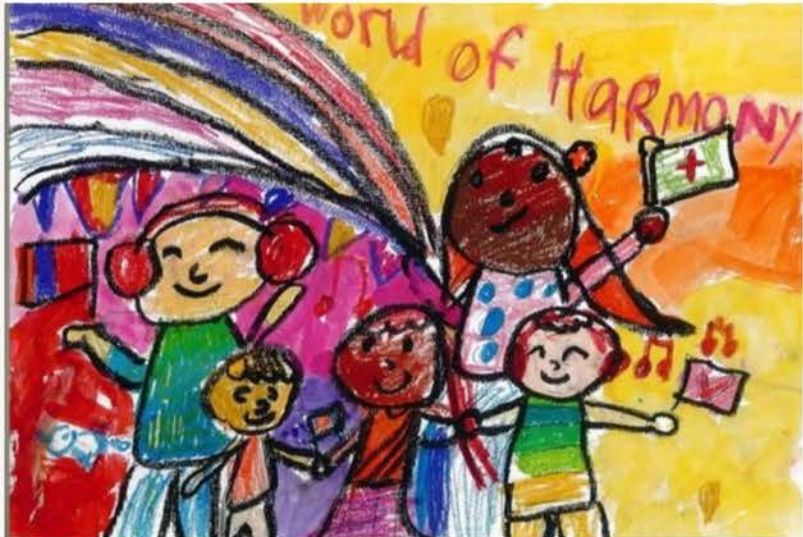
### HARMONY DAY POSTER COMPETITION

Theme: **Harmony – what can we do?**

Entries Close: **April 12 2024**

Specifications: **A3 drawing, painting or mixed media work**

[ENTER HERE](#)



**WHO CAN ENTER?**  
The Harmony Day Poster Competition is open to school students in all schools in Australia. Entries are based on the student's school year for 2024.

**PRIZES**  
The competition will be divided into two sections:

- Junior, years K to 6
- Senior, years 7 – 12

And, within each section, into groups based on year of study (see Terms and Conditions below).

- The overall winner in each of the Junior and Senior sections will receive \$500.

Go to: <https://movingforwardtogether.org.au/poster-competition/> for more details.

Please see Mrs McIntyre for details and entries.

Myall Creek Memorial Student Art, Writing and Song Competition – Due Friday 17th May

# THOUGHTS 'N' DREAMS '24

## ENTER NOW!

The Friends of Myall Creek Committee invite all school children from Years K to 12 to participate in the 15th annual Thoughts 'n' Dreams student art, writing and song competition.

Join hundreds of other school kids from across Australia to say **NO** to racism and **YES** to treating everyone with respect and understanding. ENTRY DETAILS OVERLEAF.

[www.myallcreek.org](http://www.myallcreek.org)

THEME

Best written work (essays/poems/short stories etc) or artworks (any medium), songs or dance routines depicting the theme of:

65,000 YEARS OF AWESOMENESS?

Let's celebrate!

ENTRIES

Due to the relaxing of Covid-19 restrictions, the 2024 competition will be accepting both physical and digital entries this year.

We encourage all group entries to adhere to social distancing guidelines.

**PHYSICAL ENTRIES** – Written work and/or artwork to be sent to:  
**2024 Thoughts 'n' Dreams Competition**  
At: Jo Miller  
c/o- 5 Junction Street,  
Bingara NSW 2404

For the return of written work and artworks, please supply a stamped self-addressed envelope (in the correct size). If this is not provided please see officials for alternate collection arrangements. Any items not collected will remain the property of the Friends of Myall Creek Memorial.

**DIGITAL ENTRIES** – Emailed to: [jo@hopwoodmiller.com](mailto:jo@hopwoodmiller.com)

ALL entries or emails must include the following information:  
i) Name of student. ii) Age  
iii) Email address and/or phone number  
iv) Year of student/class and school

JUDGING

Judges will choose three (3) finalists in each of the four (4) categories. These finalists will be notified by phone by **Monday 3rd June 2024.**

The judges' decision will be final.

PRIZE CATEGORIES

**CATEGORY 1** KINDERGARTEN – YEAR 3  
**CATEGORY 2** YEAR 4 – YEAR 6  
**CATEGORY 3** YEAR 7 – YEAR 9  
**CATEGORY 4** YEAR 10 – YEAR 12

Three (3) prizes will be awarded in each category.  
**FIRST PRIZE:** \$50 and a book.  
**1ST & 2ND HIGHLY COMMENDED:** \$25 and a book.

ENTRY FEE Free

**NO. OF ENTRIES** You may enter into one or more of the writing, art and/or song sections as many times as you like.

**SIZE** Written work – maximum one (1) x A4 page. Artwork – any size. Songs or dances – one (1) x four (4) minutes or less.

THE CEREMONY

**Sunday June 9th, 2024**

**9.00am** – Morning tea at the Myall Creek Memorial Hall.

**9.45am** – Short walk to the Memorial site for the ceremony, returning to the hall around midday.

**1.00pm** – Announcement of winners and awarding of prizes of the 15th Annual Thoughts 'n' Dreams Competition.

For more information please contact:  
Jo Miller on 0434 418 600 or [jo@hopwoodmiller.com](mailto:jo@hopwoodmiller.com) or go to: [www.myallcreek.org](http://www.myallcreek.org)

DEADLINE

Closing date for entries:  
**5.00pm, Friday 17th May, 2024**

NO late online entries will be accepted.

GREAT PRIZES TO BE WON

65,000 YEARS OF AWESOMENESS. LET'S CELEBRATE!

2024 MYALL CREEK MEMORIAL STUDENT ART, WRITING AND SONG COMPETITION





## ARTISTS AT WORK







## FFL OUTDOOR RECREATION GROUP

Our Outdoor Recreation Group has been out kayaking, swimming and fishing these past two weeks, enjoying nature while learning about water safety, team building, problem solving and the appreciation of the great Australian outdoors.







# SEWING GROUP

## SEWING GROUP

The After School Sewing Group had another great afternoon. They made 6 library bags, 2 mastectomy pillows, 6 scent hearts for premature babies, 4 premature baby seatbelts and 3 port pillows. We are so proud of these students for giving up their time to help others in need. Thanks again to Jenny Blackey, Tiarna Beveridge, Cathy Foelz and Mrs Lockett for teaching the students these valuable skills. Thanks also to the Inverell Sewing for Charity group for donating the fabric. Our next After School Sewing Session will be on in a fortnight (Tuesday 2.4.24). All secondary students are welcome to attend.







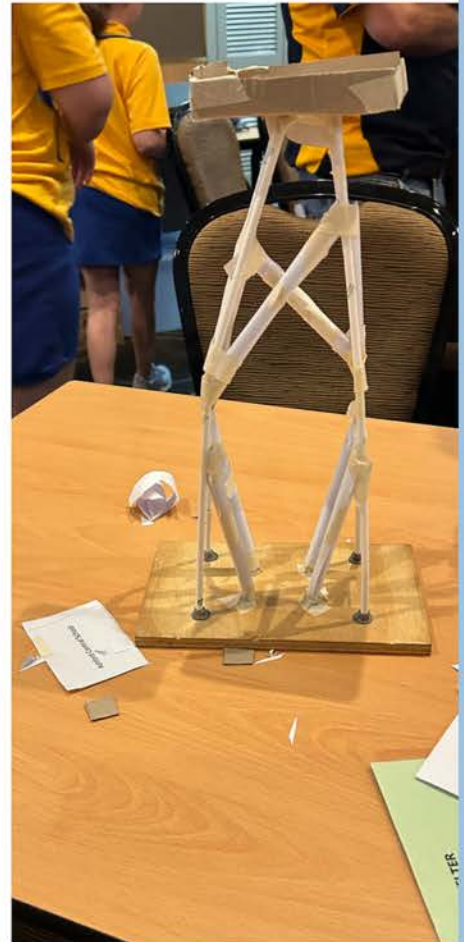
## SCIENCE AND ENGINEERING CHALLENGE

On Friday, 8th March we went to Inverell to do the Science and Engineering Challenge.

We participated in a series of activities including bridge building, wind turbines, tower making and more.

With eight schools at the Challenge from all over the district, Ashford came 3rd.

Written by Charlee - Rae Johnson-Nguyen







## Easter Hat Parade & Egg Hunt

Parents and community members are invited to attend the Easter Hat Parade under the COLA on Thursday 28th March, beginning at 12 Midday. Prizes will be awarded for the best hat in each year group. Following this, K-6 students will be participating in an Easter Egg hunt.

Students will be able to make their own Easter hats at school or are welcome to bring in their own home-made hats.







Please remember to hand the envelopes back into the office, even if you are not ordering.



02 6772 3519  
newengland@msp.com.au  
PO Box 1231 Armidale  
NSW 2350  
[www.msp.com.au](http://www.msp.com.au)

# SAY CHEESE

## School Photo Day is:

# Thursday 11<sup>th</sup> April 2024

### HAVE YOUR CHILD'S SCHOOL MEMORIES CAPTURED FOREVER!

Please take the time to read the relevant information on the MSP Photography payment envelopes and remember these helpful points:

- ❑ Don't seal envelopes inside each other. You can pay for all children in one envelope; however, each child needs to have their own envelope on photo day.
- ❑ Family envelopes are available at the school office upon request.
- ❑ Family photos will be packed inside the eldest child's individual photo pack.
- ❑ Please enclose the correct money as no change can be given.



**For photo day queries please call our  
friendly staff on (02) 6772 3519**





# TOP ATTENDERS

## TOP SCHOOL ATTENDERS

Congratulations to the following students for achieving above the state average of 92% attendance.

CONGRATULATIONS!

Lachlan	Batty	Ellie	Foley	Declan	Muscat
Tiarnie	Batty	Ella	Grabham	Sam	Muscat
Duke	Beveridge	Thomas	Grabham	Elizabeth	Ngatamariki
Joe	Beveridge	Arya	Green	Ford	Ngatamariki
Theo	Boyd	Jacob	Hillhouse	Mackenna	Ozanne-Sharwood
Stuart	Bradley	Kytiana	Irving	Cobi-Lee	Short
Kurt	Charles	Leonard	Irving	Dridan	Stanley
Tyrus	Charles	Hunter	Irwin	Terry	Stevens-Drew
Flynn	Cook	Wyatt	Langbein	Mia	Stewart
Alaska	Coombes	Claye	Lavender	Ruby	Taylor
Kane	Coombes	Mahalia	Lavender	Darcy	Thompson
Ayla	Davis	Mikayla	Lazar-Brown	Jason	Whalley
Rochelle-Claire	Davis	Lexi	Martinez	Sophiee	Whalley
Leroy	Dedula	Amelia	Murphy	Ashton	Wieczorek
Peter	Dedula	Hailee-Mae	Murphy	Emily	Yang
Lillie-Anne	Dell	Jack	Murphy	Emma	Yang
Christie	Fleming-Leek	Mia	Murphy	Samantha	Yang
Bailey	Foelz	Brooklyn	Muscat		



### ASHFORD LIONS CLUB EASTER RAFFLE

TICKETS ARE \$2 EACH OR 3 FOR \$5  
DRAWN 28 APRIL 2024

AVAILABLE FROM CAMPBELL & FRIENDSHIP CHEMIST ASHFORD,  
BTC & T & STORE



INVERELL SHIRE YOUTH ADVISORY COUNCIL PRESENTS

## Back in time DISCO

for years 4, 5 & 6

**10TH APRIL 2024**  
5:30PM TIL 7:00PM

ROSS HILL PUBLIC SCHOOL HALL

**GAMES & PRIZES FOR BEST DRESSED**  
BBQ SUPPLIED

INVERELL SHIRE COUNCIL  
Youth Week 11-21 April 2024  
nsw.gov.au/youthweek



### ASHFORD LIONS EASTER EGG HUNT SAUSAGE SIZZLE

HELD AT THE PARK  
ON 28 MARCH 2024 5-00 PM  
EASTER EGG HUNT  
EASTER BUNNY PAINTING  
JUDGING OF THE COLOURING COMP  
AND DRAWING OF THE EASTER RAFFLE







## STAR TICKET CANTEEN VOUCHER WINNERS

### CONGRATULATIONS

<b>Kinder</b>	Ruby Taylor	Allakae Hillhouse
<b>1/2</b>	Ella Grabham	N/A
<b>3/4</b>	Emma Yang	Hunter Ryan
<b>5/6</b>	Ryley Ryan	Lanaya Whalley
<b>Secondary</b>	Joy Doney	Tiarnie Batty

Star tickets are token rewards that are handed to students displaying positive behaviour in any setting to reinforce expectation. It is the students responsibility for placing the completed star ticket into their allocated star ticket box, which is located in the Ashford Central School Library. Tickets are drawn out of the star ticket box by the teacher at fortnightly assembly.

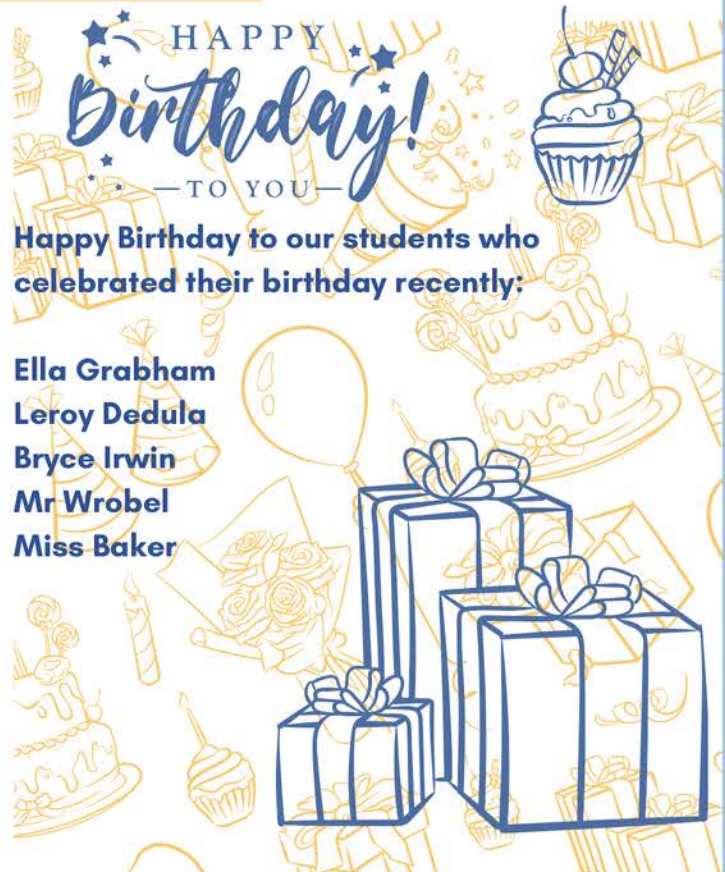
## TOP MERIT AWARD RECIPIENTS

### PRIMARY

Jacob Hillhouse  
Sam Muscat  
Axel Ryan  
Samayha Lazar-Brown  
Terry Stevens-Drew  
Kytiana Irving  
Tyler Schumann  
Ella Grabham  
Kane Coombes  
Kymarni Allen  
Samantha Yang  
Declan Muscat  
Amelia Murphy  
Arya Green  
Jason Whalley

### SECONDARY

Chloe Hurst  
Darcy Thompson  
Chloe Drysdale  
Makeely Hancock  
Duncan Crafar  
Sarah Strohfeldt  
Aidan Ryan







## Educational Pathways Program

**Move.Forward**

**Your teen's career starts now!**

### 2024 EDUCATIONAL PATHWAYS PROGRAM

The Educational Pathways Program complements existing careers education activities through the provision of additional resources. Head Teacher Careers and SBAT Engagement Officers work closely with schools to:

- Ensure students have access to sound advice, great training pathways and rewarding work opportunities.
- Promote SBAT opportunities, a proven pathway for students to successfully transition to work and/or further education.
- Support students with barriers to education

Program initiatives include:

- Innovating Careers Education
- Enhancing SBAT Engagement
- TAFE Start Your Future Courses
- Job Readiness Workshops
- Educational Pathways VET Ambassadors
- Apprenticeship and Traineeship Head Start
- Back In The Game
- TAFE NSW Early School Leaver

[education.nsw.gov.au/educational-pathways](https://education.nsw.gov.au/educational-pathways)

Talk to your school's Career Advisor to unlock your child's potential!

#### MEET OUR NEW TEAM

**Head Teacher Careers: Jacinta Gorton**

0460 031 947 | [jacinta.gorton1@det.nsw.edu.au](mailto:jacinta.gorton1@det.nsw.edu.au)

**SBAT Engagement Officer: Melissa Daskey**

0460 029 621 | [melissa.daskey2@det.nsw.edu.au](mailto:melissa.daskey2@det.nsw.edu.au)

**School Admin Officer: Tracey Walsh**

02 6722 3777 | [tracey.walsh20@det.nsw.edu.au](mailto:tracey.walsh20@det.nsw.edu.au)

#### Supporting the following schools:

- Inverell High School
- Macintyre High School
- Ashford Central School
- Bingara Central School
- Barraba Central School
- Bundarra Central School
- Warialda High School



# Your Wellbeing Nurse

## You can talk to your wellbeing nurse about:

- health and wellbeing concerns
- healthcare options
- finding health and community services.

Any student enrolled at a school with a wellbeing nurse and their family members can get support from a wellbeing nurse.

## Parents

- Contact the school to ask to see or speak to the wellbeing nurse
- Let a teacher or the school learning and support team know you would like to see the wellbeing nurse.

## Students 14 years and older

- Let a teacher or the school learning and support team know you would like to see the wellbeing nurse
- Approach the wellbeing nurse directly to speak with them privately.

### Your wellbeing nurse is at the school on

20th March, 4th April, 8th May

### Contact your wellbeing nurse

Rebecca Collyer

0457681867

Your wellbeing nurse is a highly skilled registered nurse from NSW Health.

Your wellbeing nurse helps students and their family get health and wellbeing support.



Visit [www.health.nsw.gov.au/whinprogram](http://www.health.nsw.gov.au/whinprogram) or scan the QR code for further information about wellbeing nurses.



Wellbeing and Health In-reach  
Nurse Coordinator program







## INVERELL SCOUTS

Located on Glen Innes Rd,  
Next to the Caravan Park

**Joeys/Cubs 5-11 years**

**Thursday 6.00 – 7.00pm**

**Scouts/Venturers 12-17 years**

**Tuesday 6.00 – 8.00pm**

**Enquiries Jon 0418 463 206**

**Boys and Girls Welcome**



Watermelons and Rockmelons available  
for purchasing from the school office

Whole Watermelons - \$10

Whole Rockmelons - \$3



### RIDDLE

### *Of the Week*

What is always in front of you but  
can't be seen?

Answer on the back page

## UPCOMING COMMUNITY EVENTS

### SAT MAR 23

St Marks Anglican Church Centenary  
Celebrations - 11:00am start

### THU MAR 28

Ashford Central School Easter Hat Parade  
at the Cola starting 12:00noon.

### FRI - SUN MAR 29-31

The Swan Cup  
Inverell Polocrosse Club Carnival  
Eddy Park Lane, Rob Roy NSW

### SAT - SUN MAR 30-31

Easter Eggstravaganza Mower Racing  
Inverell Speedway Reserve  
Gates open at 9:00am with racing beginning at  
10:00am

### SUN APR 7

Sapphire City Markets

### WED - SUN APR 10-14

2024 Premier Car Rally  
Hosted in Inverell

### SUN APR 21

Sapphire City Markets

### SAT APR 27

2024 Multicultural Festival  
Victoria Park, Inverell

### THU - SUN MAY 2-5

Australian Celtic Festival  
Glen Innes

To have your community event or news listed  
on this page, please contact the school.

02 6725 4101

ashford-c.school@det.nsw.edu.au





# Ashford TENNIS CLUB



## MEMBERSHIP

\$50 Adults - \$20 School Children

## SOCIAL TENNIS

\$5 Key Deposit  
(Refundable on Key Return)

\$5 Adults - \$3 Kids

Social tennis starting soon

## HIRE OF COURTS

Contact Maree for arrangements.

President:	Gilbert Fitzhannim	0428 195 501
Vice President:	Mark Thorn	
Secretary:	Maree Akhurst	0438 294 646
Treasurer:	Leza Lockett	0458 404 765



## ASHFORD SHOWGROUND STATUTORY LAND MANAGERS

**Anyone wishing to book Ashford Showgrounds for an event or simply wanting to contact The Showground Land Managers Trust, please contact the Secretary.**

Secretary/Treasurer: Trevor Tindall  
Ashford Show Grounds Statutory Land Manager  
1276 Wallangra Road, Ashford NSW 2361  
Email: rusty-tin@bigpond.com  
Mobile: 0448 811 813

If the secretary can not be reached , please try David Thompson (President) on 0488 507 824.



# Ashford Servo

**OPEN 7.00AM - 7.00PM  
7 DAYS**

Hot Food ~ Coffee ~ Groceries  
Meat & Veges ~ Lotto ~ Bait  
Phone Credit ~ Bottle Shop

## NUMEROUS SPECIALS ON SNACKS AND DRINKS

CALL 02 6725 4070  
FOR FOOD ORDERS OR ENQUIRIES

26 DUFF STREET, ASHFORD



## Matthew & Sons Drilling Services

Matt has been drilling water bores since he was 10 years old. With 40 years experience and a NSW class 6 licence, he can handle most water bore drilling jobs.

We have 3 drill rigs and are experienced in rotary air, rotary mud, casing advance, cable tool (percussion) for gravels and artesian.

Located in Graman and Inverell

**Call or text Matt 0418 362 968**

**Email:**  
matt@matthewandsons.com.au

**Website:**  
matthewandsons.com.au

ABN: 28 157 677 391





## ASHFORD GOLF CLUB



Ashford Golf Club 1963







## Ashford

### NEW GOLF COURSE—AUSPICIOUS OPENING.

"One of the most successful functions ever held in Ashford," was the universal verdict on Sunday's official opening of the Ashford golf links. Approximately, one hundred people were present when the president (Mr. H. R. Peirce) invited the club's patron (Mr. D. M. Sinclair) to declare the links officially open.

Mr. Sinclair, in a happy speech, referred to the excellent work that had been done by members, particularly the associates, and extended a very hearty welcome to the visiting players and their friends.

Mr. G. Kneipp, vice-president, supported the patron's remarks.

Mr. Netterfield (Texas), Dr. Cookson (Inverell), and Mr. F. Kneipp (Tenterfield) replied on behalf of the visitors, and complimented the president and his fellow-workers on the excellent condition of the links, considering the short time that the club had been in existence.

The associates, who had prepared morning tea and afternoon tea for the army of visitors, were amply rewarded by the appreciation, both verbal and practical, shown by all present, and to them and the tireless and enthusiastic president, must be given the greatest credit for the success of the day.

Mrs. Peirce, at the conclusion of the day, presented the trophies to the successful players.

Although the fairways and greens

were in good order, scores were generally high, indicating that it is necessary to play good golf all the time to produce satisfactory cards.

The chief event—an eighteen-hole stroke handicap—was won by D.

Middleton, with a nett score of 69. The best gross score was returned by J. Aves—82.

The nine-hole stroke event for associates went to Mrs. Cloonan, with a nett 37, the best gross score being recorded by Miss E. McFarland—52.

Miss Cloonan and A. Asher and Miss Towner and C. McFarland dead-heat-ed in the nine-holes Canadian mixed foursome, with a nett score of 39, the former pair winning the toss for the trophies.

D. M. Sinclair and R. Morell won the nine-holes four-ball best-ball, with a nett 30.

Detailed Results:—

#### 18-HOLE STROKE HANDICAP...

- D. Middleton 89-20, 69.
- J. Aves 82-12, 70.
- L. Cloonan 88-16, 72.
- E. Pillans 85-12, 73.
- R. Morell 86-13, 73.
- T. F. Satterthwaite 96-21, 75.
- D. Cookson 92-16, 76.
- J. Shearston 112-36, 76.
- L. Bice 96-19, 77.
- A. Macartney 98-20, 78.
- R. J. Howard 101-23, 78.
- H. Beveridge 102-24, 78.
- W. McNamara 102-23, 79.
- E. McFarland 98-19, 79.
- P. Saunders 99-20, 79.
- C. Pascoe 96-16, 80.
- H. Simmons 107-28, 81.
- A. K. McKenzie 111-30, 81.
- C. McFarland 98-18, 82.
- L. Miller 103-20, 83.
- Fred Kneipp 104-21, 83.
- F. Brooks 101-17, 84.
- W. Scott 110-26, 84.
- W. Lees 111-27, 84.
- R. Netterfield 98-12, 86.

#### NINE-HOLE STROKE HANDICAP

(Associates).

- Mrs. Cloonan 55-18, 37.
- Mrs. Donnelly 59-18, 41.
- Miss Burrell 56-14½, 41½.
- Miss Towner 57-14, 43.
- Mrs. R. Henderson 63-20, 43.
- Miss Jennings 62-18, 44.

- Miss Jennings 62-18, 44.
- Miss McFarland 52-7½, 44½.
- Miss Donovan 63-18, 45.
- Miss Perkins 63-18, 45.
- Miss Cloonan 59-13, 46.
- Mrs. Netterfield 58-11, 47.
- Miss Campbell 67-18, 49.
- Mrs. Bone 71-20, 51.
- Mrs. F. Kneipp 66-14, 52.
- Mrs. Loder 71-18, 53.
- Mrs. Sutherland 95-20, 75.

#### NINE-HOLE CANADIAN MIXED FOURSOME.

- Miss Cloonan and Asher 48-10, 38.
- Miss Towner and C. McFarland 49-1, 38.
- Miss Donovan and McNamara 55-15, 6.
- Mrs. Peirce and McKenzie 56-14½, 1½.
- Miss Burrell and Brooks 53-11½, 41½.
- Mrs. Donnelly and Fred. Kneipp, 7-14½, 42½.
- Mrs. Henderson and Stickels, 59-6½, 42½.
- Miss McFarland and Pillans 50-7, 43.
- Mrs. Cloonan and Cloonan 58-13, 45.
- Mrs. Netterfield and Netterfield, 9-9, 46.
- Miss Perkins and Burton 61-15, 46.
- Mrs. F. Kneipp and G. Kneipp 65-5, 49.

- Miss Jennings and Lees 65-16, 49.
- Mrs. Loder and Pascoe 68-13, 55.
- Miss Bracker and Cox 74-13, 61.

#### NINE-HOLE FOUR-BALL BEST-BALL.

- Sinclair and Morell 43-13, 30.
- Middleton and Bice 44-10, 34.
- Miller and Scott 47-12, 35.
- E. McFarland and Simmons 49-12, 7.
- Beveridge and Howard 52-12, 40.
- Wasley and Gray 59-18, 41.

Inverell Times 5th July, 1933







**IFYSS**  
Inverell Family Youth  
Support Service



# Bunbun Ashford Playgroup

A supported playgroup for children aged  
0-6 years and their Parents/ carers.

**COME AND JOIN THE FUN**

★ Ashford Preschool 53 Martyn Street Ashford

★ Each Friday during the school term from 10am- 12

★ All activities and toys provided

★ A healthy morning tea provided







## Youth Smartphone Filmmaking Workshops in Inverell for ages 12 -24



Online April 22nd  
5:30pm-7:30pm  
then  
Friday April 26th  
10am -1pm  
&  
free film screening  
6:30pm  
at The Inverell Club

with local filmmaker, Michèle Jedlicka

## FREE Smartphone Filmmaking Workshop

<https://bit.ly/3TfGPU1>

22/4 - ONLINE 5.30-7.30pm (parents invited!)  
26/4 - The Inverell Club - ages 12-24 : 10am-1pm  
26/4 - The Inverell Club - free film screening 6.30pm

Whether you are an absolute beginner or a young pro, we will cover it all.

Come and learn everything you need to know to create amazing and professional films on your phone or tablet. We will teach you all about screenwriting, cinematography, resolution, frame rates, editing, music and more but in a super fun and accessible way. **Bookings essential!**



ANGELA BLAKE

Award winning actor, filmmaker, director, author, educator & SF3 co-founder. Angela has a passion sharing her talents & tools for accessible, inclusive filmmaking.



MICHÈLE JEDLICKA

NENW-based photographer, filmmaker, writer & teacher. Michèle's smartphone films have screened in festivals all over the world.

Questions? email [sf3@sf3.com.au](mailto:sf3@sf3.com.au)

This Smartphone Filmmaking Workshop is part of the Holiday Break program supported by the Office for Regional Youth in partnership with Create NSW



## Can we assist you?

The Aboriginal Early Years Program assists Aboriginal children between the ages of 2 to 6 years to access quality, early education.



## Call today

The Aboriginal Early Years Program offers support for the following:

- ✓ Finding school placements
- ✓ Filling in enrolment paperwork
- ✓ Support for child and family
- ✓ Improving school readiness

Chantelle Paull

AEYP Coordinator/Support Worker  
3 Glen Innes Road Inverell NSW 2360

0438 421 854

[chantellep@pathfinders.ngo](mailto:chantellep@pathfinders.ngo)



Aboriginal Early Years Program



# Centenary Celebrations

## St.Marks Anglican Church, Ashford

Saturday, 23 March 2024

11am Church service

12 noon lunch at the Bowling club

(at your own cost)

*Join Please Us*

RSVP to Inverell Parish Office 02 6722 3179 or [office@inverellanglican.org](mailto:office@inverellanglican.org)





*Campbell & Freebairn*  
**PHARMACY**

ALBURY STREET, ASHFORD  
PHONE 02 6725 4013

ALL HEALTH CARE NEEDS  
DISTANCE DISPENSING SERVICE  
BABY CARE & NUTRITION  
WOUND CARE SUNGLASSES  
HEALTH AND BEAUTY PRODUCTS

**ASHFORD  
COMMUNITY  
CHURCH**



Presbyterian Parish Office 02 6721 0511

Anglican Office Inverell 02 6722 3179

**CHURCH SERVICES:**

ALTERNATE SUNDAYS AT 9AM AT THE  
PRESBYTERIAN OR ANGLICAN CHURCH

Service held bi-monthly in the Sunhaven  
Activity Room



*Jesus is moving, Jesus is present, Jesus is Lord.*

**ST PATRICKS CATHOLIC CHURCH**

MASS TIMES

3RD SATURDAY OF EACH  
MONTH AT 3.30PM

ENQUIRIES:

SACRED HEART PARISH

INVERELL 6722 1103

FR PAUL CHANDLER ADM

LOCAL CONTACT:

CATHY FOELZ 0427 879 595



**ASHFORD POLICE**

ASHFORD POLICE STATION, PH 6721 8320  
INVERELL POLICE STATION, (24 HRS) PH 67220599  
EMERGENCY 000 POLICE ASSISTANCE LINE, 131 444

**ACCESSING MEDICAL SERVICES IN ASHFORD**

**ASHFORD DOCTOR**  
Dr Abbas Hussein

Saturday Only  
8.00AM : Blood Tests  
9.00am - 5.00pm :  
Appointments  
Phone (SAT): 02 6726 2000

To make appointments on other  
days please phone Campbell  
and Freebairn Ashford on 02  
6725 4013.

**CHEMIST**  
Campbell & Freebairn  
Ashford

Open Monday to Friday  
9am - 5pm

Closed for lunch between  
12.30pm and 1.00pm daily.

Drop prescriptions in by  
11.30am for afternoon  
collection after 2.30pm.

**HELPFUL PHONE NUMBERS**  
Community Health Centre Ashford  
02 6726 2030

**Texas Doctor: Dr Abbas Hussein**  
07 4653 1363

**HACC - Ashford Home & Community Care**  
02 6725 4479

**BLOOD TESTS**  
Blood tests are conducted every 2nd  
Thursday at Community Health.  
Phone 02 6726 2030



# Duncan Coole PAINTER & DECORATOR BUILDING MAINTENANCE

*Repaint Specialist*

- Wall Papering ▪ Renovations
- Commercial ▪ Residential ▪ Insurance

**Ph: 0428 437 848**

Lic No: 158982C NSW Lic No 1104272 QLD  
ABN: 69 041 866 798



## ASHFORD MEMORIAL BOWLING CLUB

CATERING ON THURSDAY,  
FRIDAY AND SATURDAY NIGHTS

**FRIDAY NIGHTS | DINNER**

5.30PM - 8.00PM

**SATURDAY | LUNCH & DINNER**

12.00PM - 2.00PM AND 5.00PM - 8.00PM

**SUNDAY | LUNCH**

12.00PM - 2.00PM

EFTPOS AVAILABLE  
BOOKINGS FOR LARGE GROUPS DESIRABLE

**PHONE**  
**6725 4441 OR 6725 4202**

WWW.ASHFORDBOWLING.CLUB  
OFFICE@ASHFORDBOWLINGCLUB



**JCS**

**RURAL CONTRACTING**



**SERVICES INCLUDE:**  
.....

- Direct Drill Planting
- Slashing
- Boom and Spot Spraying
- Offset Disc Ploughing
- Earthmoving
- Stock and General Freight
- Contract Fencing



**CONTACT JASON**

☎ 0429 184 730

✉ [jasnic988@bigpond.com](mailto:jasnic988@bigpond.com)

ABN: 42 843 421 019

## ALANA'S TRASH & TREASURE ASHFORD



All money raised will be distributed  
back into the community.  
Donations of household and various  
items welcomed.

**OPEN TUESDAY & THURSDAY**

10.30AM - 3.30PM

**SATURDAY**

10.30AM - 1.00PM

Enquiries: 0423 348 419

Looking forward to your support in the future!





## Easy Lemon Chicken

### Ingredients

- 2 chicken breasts (around 400g each)
- ½ tbsp cornflour
- ½ tsp white pepper
- 950ml vegetable oil
- For the batter
- 2 eggs
- 150g plain flour
- 75g cornflour
- 1 tsp garlic salt or 1/2 tsp each of salt and garlic powder
- 2 tsp garlic powder
- ½ tsp bicarbonate of soda
- 1 tsp Chinese red pepper powder
- For the lemon sauce
- 2 lemons, juiced (around 100ml)
- 2 tbsp sugar
- 1½ tsp honey
- 1 tsp cornflour

### Method

- Slice the chicken breasts horizontally into two thin halves, then sprinkle over the cornflour, ½ tsp salt, the white pepper and ½ tbsp water, then leave to marinate for 20 mins.
- Meanwhile, make the batter. Whisk the eggs in a bowl, then set aside. In a second bowl, combine the plain flour, cornflour, garlic salt, garlic powder, bicarbonate of soda and red pepper powder, then tip half of the mixture into another bowl. Set one aside. Stir the whisked eggs into one bowl of the flour mixture with 3-5 tbsp cold water, adding 1 tbsp at a time. Mix well until it's the consistency of double cream.
- Coat one chicken breast in the batter until evenly covered, then coat in the flour mixture. Rub in the flour using your hands to ensure it's completely coated. Repeat until all four halves of the chicken breasts have been coated.
- Pour the vegetable oil into a medium saucepan (it should be no more than a third full) and heat over a medium-high heat until the oil reaches 160C or forms bubbles around a chopstick. Reduce the heat to medium and slowly lower the chicken breasts into the oil, in batches if your saucepan isn't big enough to do them all at once, then fry for 5 mins, turning over halfway, until pale golden.
- Let the chicken rest for 5 mins and heat the oil on high to 200C, then fry the chicken again for 30 seconds until it forms a deep golden crispy coating. Set aside to cool before cutting into even slices.
- To make the sauce, combine the lemon juice, sugar and honey in a bowl. In a separate bowl, combine the cornflour with 1½ tsp water. Put a pan on a medium heat, tip in the lemon mixture and, once it starts to bubble, slowly add the cornflour mixture until it reaches your desired sauce consistency. Remove from the heat and serve drizzled over the chicken, or as a dipping sauce.





If you or someone else needs immediate help – call 000

**Additional Support Services**

- Life Line** – 13 11 14  
24/7 confidential crisis support
- NSW Mental Health Line** – 1800 011 511  
24/7 telephone assessment & referral
- Beyond Blue** 1300 224 636  
24/7 mental health counselling, support and referral
- Alcohol & Drug Information Service**  
1800 250 015 (24/7)  
Information, support referral & counselling on drugs and alcohol
- Kids Helpline** (24hrs)  
Young people 5-25 years old
- Suicide Call Back Service** 1300 659 467  
24/7 telephone support & counselling for anyone affected by suicide
- Men's Helpline** 1300 789 978  
24/7 information & referral service for men with family and relationship concerns



**Health**  
Hunter New England  
Local Health District

**Referral**

**It's Easy....**

**You just phone or email yourself**

(If you are phoning for someone else, just check it is O.K first)

**0477 322 851**

Monday to Friday 8.00am – 4.30pm

(After hour calls welcomed – just leave a message and Farmgate staff will return your call the **next working day**)

**Email**

[HNELHD-FarmgateSupport@health.nsw.gov.au](mailto:HNELHD-FarmgateSupport@health.nsw.gov.au)

Your local Farmgate support worker:



**Farmgate Support Program**



**Free  
We Travel To You  
Confidential**

**Who Can Get Help**



Anyone experiencing stress from drought, fires, floods, COVID or other hardships

Farmers and farming families

Front line service/business providers

Local Businesses

Contract/seasonal workers

The Farmgate Support Program provides **free** emotional and mental health support to people living and working in rural & remote communities



The Farmgate team offer short term conversation or formal counselling

Practical help in finding alternative support for your current needs and circumstances

**We Will Travel To You**



Visits can be arranged on your farm, home or place of business OR any other place of convenience like your favourite coffee shop

